

For Research Use Only

Anti-Human IGF1R/CD221 Rabbit Recombinant Antibody, PBS Only

Catalog Number: 98144-1-PBS



Basic Information

| | | |
|---------------------------------------|--|---|
| Catalog Number: 98144-1-PBS | GenBank Accession Number: BC113612 | Purification Method: Protein A purification |
| Size: 1mg, 2 mg/ml | GeneID (NCBI): 3480 | CloneNo.: 241679A6 |
| Source: Rabbit | UNIPROT ID: P08069 | |
| Isotype: IgG | Full Name: IGF I receptor | |
| | Calculated MW: 1367 aa, 155 kDa | |

Applications

Tested Applications:
FC

Species Specificity:
human

Background Information

IGF1R, also named as CD221, is a receptor tyrosine kinase which mediates actions of INS-like growth factor 1 (IGF1). IGF1R binds IGF1 with high affinity and IGF2 and INS with a lower affinity, the activated IGF1R is involved in cell growth and survival control. It is crucial for tumor transformation and survival of malignant cells. IGF1R is a heterotetrameric receptor, composed of two alpha subunits (130 kDa each) and two beta subunits (~98 kDa each) (PMID: 6279656). Both the alpha and beta subunits are synthesized from a single mRNA precursor. The precursor is then glycosylated, proteolytically cleaved, and crosslinked by cysteine bonds.

Storage

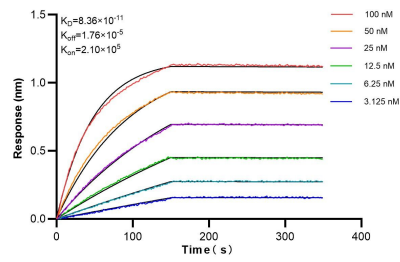
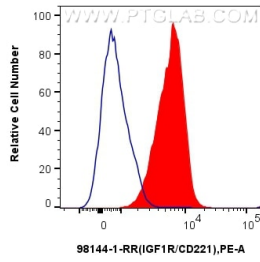
Storage:
Store at -80°C.

Storage Buffer:
PBS Only

For technical support and original validation data for this product please contact:
T: 1 (888) 4PTGLAB (1-888-478-4522) (toll free in USA), or 1(312) 455-8498 (outside USA) E: proteintech@ptglab.com
W: ptglab.com

This product is exclusively available under Proteintech Group brand and is not available to purchase from any other manufacturer.

Selected Validation Data



1×10^6 human peripheral blood granulocytes were surface stained with 0.25 μ g Anti-Human IGF1R/CD221 Rabbit Recombinant Antibody (98144-1-RR, Clone: 241679A6)(red) or Rabbit IgG Isotype Control Recombinant Antibody (98136-1-RR, Clone: 240953C9) (blue) and PE-conjugated Goat Anti-Rabbit IgG. Cells were not fixed. This data was developed using the same antibody clone with 98144-1-PBS in a different storage buffer formulation.

Biolayer interferometry (BLI) kinetic assays of 98144-1-RR against Human IGF1R/CD221 were performed. The affinity constant is 83.6 pM.