

For Research Use Only

Anti-Human IL-1 beta Rabbit Recombinant Antibody

Catalog Number: 98142-1-RR



Basic Information

Catalog Number: 98142-1-RR	GenBank Accession Number: BC008678	Purification Method: Protein A purification
Size: 100ug , 1000 µg/ml	GeneID (NCBI): 3553	CloneNo.: 240902A3
Source: Rabbit	ENSEMBL Gene ID: ENSG00000125538	
Isotype: IgG	UNIPROT ID: P01584	
	Full Name: interleukin 1, beta	
	Calculated MW: 269 aa, 31 kDa	

Applications

Tested Applications:
FC (Intra)

Species Specificity:
human

Background Information

Interleukin-1 is a pro-inflammatory cytokine with multiple biological effects. The IL-1 gene family encodes three proteins: IL-1 α , IL-1 β and their naturally occurring inhibitor IL-1RN. IL-1 Beta(IL-1 β), mainly produced by blood monocytes and tissue macrophages, has been implicated in mediating both acute and chronic inflammation. IL-1 β is known to be involved in a variety of cellular activities, including cell proliferation, differentiation and apoptosis. IL-1 β is emerging as a key mediator of carcinogenesis that characterizes host-environment interactions.

Storage

Storage:
Store at 2 - 8°C. Stable for one year after shipment.

Storage Buffer:
PBS with 0.09% sodium azide, pH 7.3.

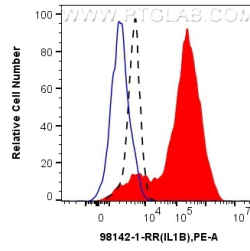
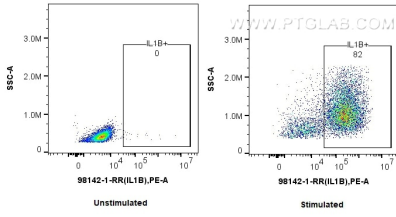
For technical support and original validation data for this product please contact:

T: 1 (888) 4PTGLAB (1-888-478-4522) (toll free in USA), or 1(312) 455-8498 (outside USA)

E: proteintech@ptglab.com
W: ptglab.com

This product is exclusively available under Proteintech Group brand and is not available to purchase from any other manufacturer.

Selected Validation Data



1x10⁶ untreated or IFN gamma, LPS and Brefeldin A treated human PBMCs were intracellularly stained with 0.25 ug Anti-Human IL-1 beta Rabbit Recombinant Antibody (98142-1-RR, Clone: 240902A3) and PE-Conjugated Goat Anti-Rabbit IgG(H+L). Cells were fixed with 4% PFA and permeabilized with Flow Cytometry Perm Buffer (PF00011-C). Granulocytes were gated.

1x10⁶ IFN gamma, LPS and Brefeldin A treated human PBMCs were intracellularly stained with 0.25 ug Anti-Human IL-1 beta Rabbit Recombinant Antibody (98142-1-RR, Clone: 240902A3) (red) or Isotype Control (blue) and PE-Conjugated Goat Anti-Rabbit IgG(H+L). 1x10⁶ unstimulated human PBMCs were intracellularly stained with 0.25 ug Anti-Human IL-1 beta Rabbit Recombinant Antibody (98142-1-RR, Clone: 240902A3) (black, dashed) and PE-Conjugated Goat Anti-

