

For Research Use Only

# Anti-Human IL-1 beta Rabbit Recombinant Antibody, PBS Only

Catalog Number: 98142-1-PBS



## Basic Information

<b>Catalog Number:</b> 98142-1-PBS	<b>GenBank Accession Number:</b> BC008678	<b>Purification Method:</b> Protein A purification
<b>Size:</b> 1mg , 2 mg/ml	<b>GeneID (NCBI):</b> 3553	<b>CloneNo.:</b> 240902A3
<b>Source:</b> Rabbit	<b>ENSEMBL Gene ID:</b> ENSG00000125538	
<b>Isotype:</b> IgG	<b>UNIPROT ID:</b> P01584	
	<b>Full Name:</b> interleukin 1, beta	
	<b>Calculated MW:</b> 269 aa, 31 kDa	

## Applications

**Tested Applications:**  
FC (Intra)

**Species Specificity:**  
human

## Background Information

Interleukin-1 is a pro-inflammatory cytokine with multiple biological effects. The IL-1 gene family encodes three proteins: IL-1 $\alpha$ , IL-1 $\beta$  and their naturally occurring inhibitor IL-1RN. IL-1 Beta(IL-1 $\beta$ ), mainly produced by blood monocytes and tissue macrophages, has been implicated in mediating both acute and chronic inflammation. IL-1 $\beta$  is known to be involved in a variety of cellular activities, including cell proliferation, differentiation and apoptosis. IL-1 $\beta$  is emerging as a key mediator of carcinogenesis that characterizes host-environment interactions.

## Storage

**Storage:**  
Store at -80°C.

**Storage Buffer:**  
PBS Only

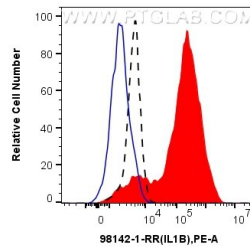
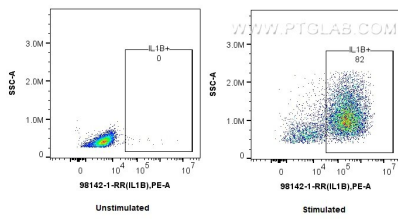
For technical support and original validation data for this product please contact:

T: 1 (888) 4PTGLAB (1-888-478-4522) (toll free in USA), or 1(312) 455-8498 (outside USA)

E: [proteintech@ptglab.com](mailto:proteintech@ptglab.com)  
W: [ptglab.com](http://ptglab.com)

**This product is exclusively available under Proteintech Group brand and is not available to purchase from any other manufacturer.**

## Selected Validation Data



1x10<sup>6</sup> untreated or IFN gamma, LPS and Brefeldin A treated human PBMCs were intracellularly stained with 0.25 ug Anti-Human IL-1 beta Rabbit Recombinant Antibody (98142-1-RR, Clone: 240902A3) and PE-Conjugated Goat Anti-Rabbit IgG(H+L). Cells were fixed with 4% PFA and permeabilized with Flow Cytometry Perm Buffer (PF00011-C). Granulocytes were gated. This data was developed using the same antibody clone with 98142-1-PBS in a



1x10<sup>6</sup> IFN gamma, LPS and Brefeldin A treated human PBMCs were intracellularly stained with 0.25 ug Anti-Human IL-1 beta Rabbit Recombinant Antibody (98142-1-RR, Clone: 240902A3) (red) or Isotype Control (blue) and PE-Conjugated Goat Anti-Rabbit IgG(H+L). 1x10<sup>6</sup> unstimulated human PBMCs were intracellularly stained with 0.25 ug Anti-Human IL-1 beta Rabbit Recombinant Antibody (98142-1-RR, Clone: 240902A3) (black, dashed) and PE-Conjugated Goat Anti-

