

For Research Use Only

Anti-Human CXCL8/IL-8 Rabbit Recombinant Antibody

Catalog Number: 98137-1-RR



Basic Information

Catalog Number: 98137-1-RR	GenBank Accession Number: BC013615	Purification Method: Protein A purification
Size: 100ug, 1000 µg/ml	GeneID (NCBI): 3576	CloneNo.: 240889B2
Source: Rabbit	ENSEMBL Gene ID: ENSG00000169429	
Isotype: IgG	UNIPROT ID: P10145	
	Full Name: interleukin 8	
	Calculated MW: 99 aa, 11 kDa	

Applications

Tested Applications:
FC (Intra)

Species Specificity:
human

Background Information

Interleukin 8 (IL-8), also known as CXCL8, is a CXC chemokine family member. This chemokine is secreted by a variety of cell types including monocyte/macrophages, T cells, neutrophils, fibroblasts, endothelial cells, and various tumor cell lines in response to inflammatory stimuli. IL-8 has two primary functions. It induces chemotaxis in target cells, primarily neutrophils but also other granulocytes, causing them to migrate toward the site of infection. IL-8 also induces phagocytosis once they have arrived. This gene is believed to play a role in the pathogenesis of bronchiolitis, a common respiratory tract disease caused by viral infection. IL-8 is also known to be a potent promoter of angiogenesis. IL-8 has been associated with tumor angiogenesis, metastasis, and poor prognosis in breast cancer. IL-8 may present a novel therapeutic target for estrogen driven breast carcinogenesis and tumor progression.

Storage

Storage:
Store at 2 - 8°C. Stable for one year after shipment.

Storage Buffer:
PBS with 0.09% sodium azide, pH 7.3.

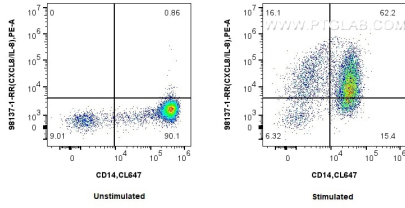
For technical support and original validation data for this product please contact:

T: 1 (888) 4PTGLAB (1-888-478-4522) (toll free in USA), or 1(312) 455-8498 (outside USA)

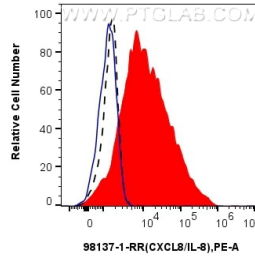
E: proteintech@ptglab.com
W: ptglab.com

This product is exclusively available under Proteintech Group brand and is not available to purchase from any other manufacturer.

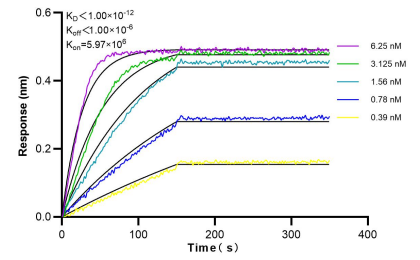
Selected Validation Data



1x10⁶ untreated or IFN gamma, LPS and Brefeldin A treated human PBMCs were intracellularly stained with 0.25 ug Anti-Human CXCL8/IL-8 Rabbit Recombinant Antibody (98137-1-RR, Clone: 240889B2) and PE-Conjugated Goat Anti-Rabbit IgG(H+L). Cells were co-stained with CoraLite® Plus 647 Anti-Human CD14 Rabbit Recombinant Antibody (CL647-98040, Clone: 230332D7). Cells were fixed with 4% PFA and permeabilized with Flow Cytometry Perm



1x10⁶ IFN gamma, LPS and Brefeldin A treated human PBMCs were intracellularly stained with 0.25 ug Anti-Human CXCL8/IL-8 Rabbit Recombinant Antibody (98137-1-RR, Clone: 240889B2) (red) or Rabbit IgG Isotype Control Recombinant Antibody (98136-1-RR, Clone: 240953C9) (blue) and PE-Conjugated Goat Anti-Rabbit IgG(H+L). 1x10⁶ untreated human PBMCs were intracellularly stained with 0.25 ug Anti-Human CXCL8/IL-8 Rabbit Recombinant Antibody (98137-1-RR, Clone:



Biolayer interferometry (BLI) kinetic assays of 98137-1-RR against Human CXCL8/IL-8 were performed. The affinity constant is below 1 pM.