

For Research Use Only

Rabbit IgG Isotype Control Recombinant Antibody

Catalog Number: 98136-1-RR



Basic Information

Catalog Number: 98136-1-RR	GenBank Accession Number: GeneID (NCBI):	Purification Method: Protein A purification
Size: 100ug, 1000 µg/ml	Full Name:	CloneNo.: 240953C9
Source: Rabbit		Recommended Dilutions: WB 1:500-1:2000 IHC 1:250-1:1000 IF/ICC 1:50-1:500
Isotype: IgG		

Applications

Tested Applications: WB, IHC, IF/ICC, FC, FC (Intra), IP	Positive Controls: WB : , IHC : , IF/ICC : ,
Species Specificity: n/a	
Note-IHC: suggested antigen retrieval with TE buffer pH 9.0; (*) Alternatively, antigen retrieval may be performed with citrate buffer pH 6.0	

Background Information

This product is an isotype control antibody, which is used to estimate the non-specific binding of target primary antibodies due to Fc receptor binding or other protein-protein interactions. An isotype control antibody should have the same immunoglobulin type and be used at the same concentration as the test antibody.

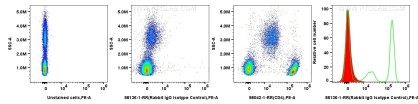
Storage

Storage:
Store at 2 - 8°C. Stable for one year after shipment.
Storage Buffer:
PBS with 0.09% sodium azide, pH 7.3.

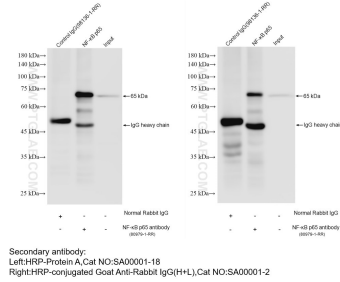
For technical support and original validation data for this product please contact:
T: 1 (888) 4PTGLAB (1-888-478-4522) (toll free in USA), or 1(312) 455-8498 (outside USA)
E: proteintech@ptglab.com
W: ptglab.com

This product is exclusively available under Proteintech Group brand and is not available to purchase from any other manufacturer.

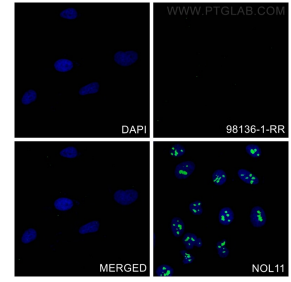
Selected Validation Data



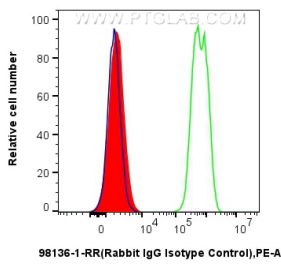
1x10⁶ human PBMCs were surface stained with 0.2 ug Rabbit IgG Isotype Control Recombinant Antibody (98136-1-RR, Clone: 240953C9) and PE-Conjugated Goat Anti-Rabbit IgG(H+L) (red in histogram), or 0.2 ug Anti-Human CD4 Rabbit Recombinant Antibody (98042-1-RR) and PE-Conjugated Goat Anti-Rabbit IgG(H+L) (green in histogram), or unstained (blue in histogram). Cells were not fixed.



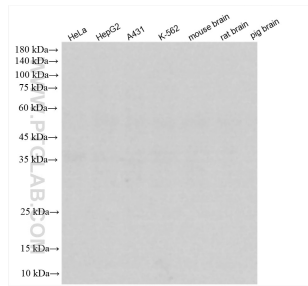
IP result of anti-IgG Isotype Control (IP:98136-1-RR, 4ug; Detection:98136-1-RR 1:0) with HepG2 cells lysate 2000 ug.



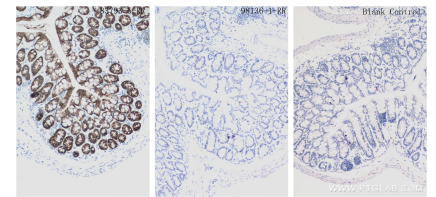
Immunofluorescent analysis of (4% PFA) fixed HeLa cells using IgG Isotype Control antibody (98136-1-RR, Clone: 240953C9) at dilution of 1:200 and CoraLite® 488-Conjugated Goat Anti-Rabbit IgG(H+L) (SA00013-2). NOL11 Recombinant antibody (83391-6-RR) is a positive control.



1x10⁶ SH-SY5Y cells were intracellularly stained with 0.2 ug Rabbit IgG Isotype Control Recombinant Antibody (98136-1-RR, Clone:240953C9) and PE-Conjugated Goat Anti-Rabbit IgG(H+L) (red), or 0.2 ug PGF Recombinant antibody (83170-4-RR, Clone:230532H3) and APC-Conjugated AffiniPure Goat Anti-Rabbit IgG(H+L) (green), or unstain (blue). Cells were fixed with 4% PFA and permeabilized with Flow Cytometry Perm Buffer (PF00011-C).



HeLa cells were subjected to SDS PAGE followed by western blot with 98136-1-RR (IgG Isotype Control antibody) at dilution of 1:1000 incubated at room temperature for 1.5 hours.



Immunohistochemical analysis of paraffin-embedded mouse colon tissue slide using 98136-1-RR (IgG Isotype Control antibody) at dilution of 2 ug/mL or 83793-5-RR (Cadherin-17 Recombinant antibody) or unstained (under 10x lens). Heat mediated antigen retrieval with Tris-EDTA buffer (pH 9.0).