

For Research Use Only

Anti-Human CD2 Rabbit Recombinant Antibody

Catalog Number: 98134-1-RR



Basic Information

Catalog Number:

98134-1-RR

Size:

100ug , 1000 µg/ml

Source:

Rabbit

Isotype:

IgG

GenBank Accession Number:

BC033583

GeneID (NCBI):

914

ENSEMBL Gene ID:

ENSG00000116824

UNIPROT ID:

P06729

Full Name:

CD2 molecule

Calculated MW:

351 aa, 39 kDa

Purification Method:

Protein A purification

CloneNo.:

241222E2

Applications

Tested Applications:

FC

Species Specificity:

human

Background Information

CD2 is a cell surface glycoprotein present on a majority of thymocytes, all mature T cells and subset of NK cells but not on B lymphocytes. It is a pan T-cell marker. CD2 interacts with lymphocyte function-associated antigen (LFA-3/CD58) and CD48/BCM1 to mediate adhesion between T-cells and other cell types. CD2 is implicated in the triggering of T-cells, the cytoplasmic domain is implicated in the signaling function.

Storage

Storage:

Store at 2 - 8°C. Stable for one year after shipment.

Storage Buffer:

PBS with 0.09% sodium azide, pH 7.3.

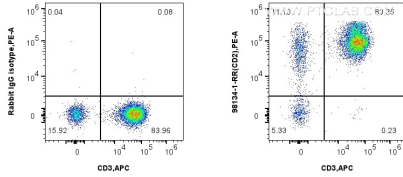
For technical support and original validation data for this product please contact:

T: 1 (888) 4PTGLAB (1-888-478-4522) (toll free in USA), or 1(312) 455-8498 (outside USA)

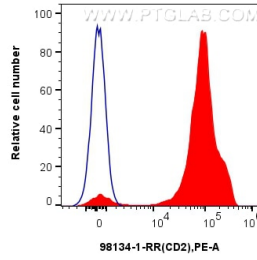
E: proteintech@ptglab.com
W: ptglab.com

This product is exclusively available under Proteintech Group brand and is not available to purchase from any other manufacturer.

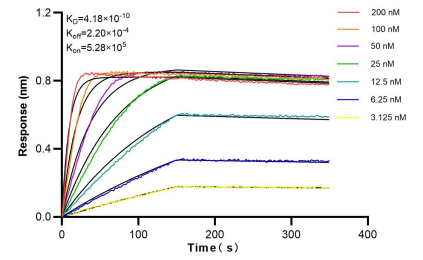
Selected Validation Data



1x10⁶ human PBMCs were surface stained with 0.25 ug Anti-Human CD2 Rabbit Recombinant Antibody (98134-1-RR, Clone: 241222E2) or Isotype Control, and PE-Conjugated Goat Anti-Rabbit IgG(H+L). Cells were co-stained with APC Anti-Human CD3 (OKT3) Mouse IgG2a Recombinant Antibody (APC-65569, Clone: OKT3). Cells were incubated with FC Receptor Block prior to staining. Cells were not fixed.



1x10⁶ human PBMCs were surface stained with 0.25 ug Anti-Human CD2 Rabbit Recombinant Antibody (98134-1-RR, Clone: 241222E2) (red) or Isotype Control (blue), and PE-Conjugated Goat Anti-Rabbit IgG(H+L). Cells were incubated with FC Receptor Block prior to staining. Cells were not fixed.



Bi-layer interferometry (BLI) kinetic assays of 98134-1-RR against Human CD2 were performed. The affinity constant is 0.418 nM.