

For Research Use Only

Anti-Human CD2 Rabbit Recombinant Antibody, PBS Only

Catalog Number: 98134-1-PBS



Basic Information

Catalog Number: 98134-1-PBS	GenBank Accession Number: BC033583	Purification Method: Protein A purification
Size: 1mg , 2 mg/ml	GeneID (NCBI): 914	CloneNo.: 241222E2
Source: Rabbit	ENSEMBL Gene ID: ENSG00000116824	
Isotype: IgG	UNIPROT ID: P06729	
	Full Name: CD2 molecule	
	Calculated MW: 351 aa, 39 kDa	

Applications

Tested Applications:
FC

Species Specificity:
human

Background Information

CD2 is a cell surface glycoprotein present on a majority of thymocytes, all mature T cells and subset of NK cells but not on B lymphocytes. It is a pan T-cell marker. CD2 interacts with lymphocyte function-associated antigen (LFA-3/CD58) and CD48/BCM1 to mediate adhesion between T-cells and other cell types. CD2 is implicated in the triggering of T-cells, the cytoplasmic domain is implicated in the signaling function.

Storage

Storage:
Store at -80°C.

Storage Buffer:
PBS Only

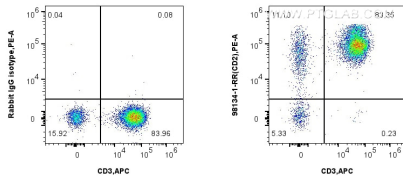
For technical support and original validation data for this product please contact:

T: 1 (888) 4PTGLAB (1-888-478-4522) (toll free in USA), or 1(312) 455-8498 (outside USA)

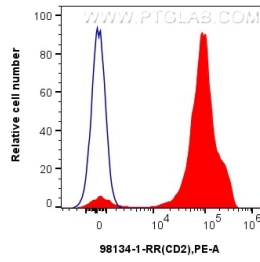
E: proteintech@ptglab.com
W: ptglab.com

This product is exclusively available under Proteintech Group brand and is not available to purchase from any other manufacturer.

Selected Validation Data



1x10⁶ human PBMCs were surface stained with 0.25 ug Anti-Human CD2 Rabbit Recombinant Antibody (98134-1-RR, Clone: 241222E2) or Isotype Control, and PE-Conjugated Goat Anti-Rabbit IgG(H+L). Cells were co-stained with APC Anti-Human CD3 (OKT3) Mouse IgG2a Recombinant Antibody (APC-65569, Clone: OKT3). Cells were incubated with FC Receptor Block prior to staining. Cells were not fixed. This data was developed using the same antibody clone



1x10⁶ human PBMCs were surface stained with 0.25 ug Anti-Human CD2 Rabbit Recombinant Antibody (98134-1-RR, Clone: 241222E2) (red) or Isotype Control (blue), and PE-Conjugated Goat Anti-Rabbit IgG(H+L). Cells were incubated with FC Receptor Block prior to staining. Cells were not fixed. This data was developed using the same antibody clone with 98134-1-PBS in a different storage buffer formulation.