

For Research Use Only

Anti-Human CD36 Rabbit Recombinant Antibody, PBS Only

Catalog Number: 98132-1-PBS



Basic Information

Catalog Number:

98132-1-PBS

Size:

1mg, 2 mg/ml

Source:

Rabbit

Isotype:

IgG

GenBank Accession Number:

NM_001001548.3

GeneID (NCBI):

948

UNIPROT ID:

P16671-1

Full Name:

CD36 molecule (thrombospondin receptor)

Calculated MW:

53 kDa

Purification Method:

Protein A purification

CloneNo.:

241262D5

Applications

Tested Applications:

FC

Species Specificity:

human

Background Information

CD36, also named GP3B and GP4, is an 88-kDa membrane glycoprotein present on platelets, monocytes, erythroid precursors, endothelial cells, and several tumor cell lines. CD36 binds to collagen, thrombospondin, anionic phospholipids, and long-chain fatty acids and may function in the transport and/or as a regulator of fatty acid transport and oxidized LDL. CD36 may function as a cell adhesion molecule. It mediates cytoadherence of *Plasmodium falciparum* parasitized erythrocytes. Mutation of CD36 will cause platelet glycoprotein IV deficiency which is known as CD36 deficiency. Genetic variations in CD36 are associated with susceptibility to coronary heart disease type 7 (CHDS7).

Storage

Storage:

Store at -80°C.

Storage Buffer:

PBS Only

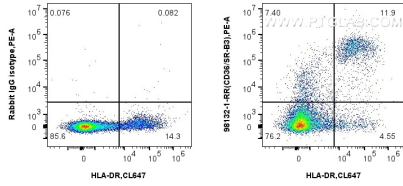
For technical support and original validation data for this product please contact:

T: 1 (888) 4PTGLAB (1-888-478-4522) (toll free in USA), or 1(312) 455-8498 (outside USA)

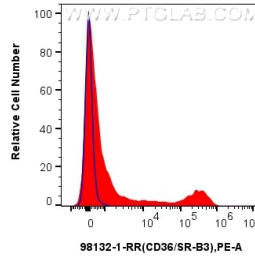
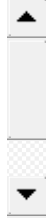
E: proteintech@ptglab.com
W: ptglab.com

This product is exclusively available under Proteintech Group brand and is not available to purchase from any other manufacturer.

Selected Validation Data



1x10⁶ human PBMCs were surface stained with 0.25 ug Anti-Human CD36 Rabbit Recombinant Antibody (98132-1-RR, Clone: 241262D5) or Isotype Control, and PE-Conjugated AffiniPure Goat Anti-Rabbit IgG(H+L). Cells were co-stained with CoraLite® Plus 647 Anti-Human HLA-DR (L243) Mouse IgG2a Recombinant Antibody (CL647-65560, Clone: LZ43). Cells were incubated with FC Receptor Block prior to staining. Cells were not fixed. This data was



1x10⁶ human PBMCs were surface stained with 0.25 ug Anti-Human CD36 Rabbit Recombinant Antibody (98132-1-RR, Clone: 241262D5) (red) or Isotype Control (blue), and PE-Conjugated AffiniPure Goat Anti-Rabbit IgG(H+L). Cells were incubated with FC Receptor Block prior to staining. Cells were not fixed. This data was developed using the same antibody clone with 98132-1-PBS in a different storage buffer formulation.