

For Research Use Only

Anti-Human CD324 (E-cadherin) Rabbit Recombinant Antibody, PBS Only

Catalog Number: 98123-1-PBS



Basic Information

Catalog Number: 98123-1-PBS	GenBank Accession Number: NM_004360.5	Purification Method: Protein A purification
Size: 1mg , 2 mg/ml	GeneID (NCBI): 999	CloneNo.: 241098F7
Source: Rabbit	UNIPROT ID: P12830-1	
Isotype: IgG	Full Name: cadherin 1, type 1, E-cadherin (epithelial)	
	Calculated MW: 97 kDa	

Applications

Tested Applications:
FC

Species Specificity:
human

Background Information

Cadherins are a family of transmembrane glycoproteins that mediate calcium-dependent cell-cell adhesion and play an important role in the maintenance of normal tissue architecture. E-cadherin (epithelial cadherin), also known as CD324, CDH1 (cadherin 1) or CAM 120/80, is a classical member of the cadherin superfamily which also include N-, P-, R-, and B-cadherins. E-cadherin is expressed on the cell surface in most epithelial tissues. The extracellular region of E-cadherin establishes calcium-dependent homophilic trans binding, providing specific interaction with adjacent cells, while the cytoplasmic domain is connected to the actin cytoskeleton through the interaction with p120-, α -, β -, and γ -catenin (plakoglobin). E-cadherin is important in the maintenance of the epithelial integrity, and is involved in mechanisms regulating proliferation, differentiation, and survival of epithelial cell. E-cadherin may also play a role in tumorigenesis. It is considered to be an invasion suppressor protein and its loss is an indicator of high tumor aggressiveness.

Storage

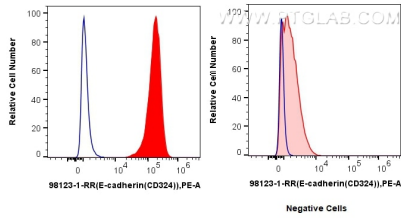
Storage:
Store at -80°C.

Storage Buffer:
PBS Only

For technical support and original validation data for this product please contact:
T: 1 (888) 4PTGLAB (1-888-478-4522) (toll free in USA), or 1(312) 455-8498 (outside USA) E: proteintech@ptglab.com
W: ptglab.com

This product is exclusively available under Proteintech Group brand and is not available to purchase from any other manufacturer.

Selected Validation Data



1x10⁶ MCF-7 cells (left) or Jurkat cells (right) were surface stained with 0.25 ug Anti-Human E-cadherin Rabbit Recombinant Antibody (98123-1-RR, Clone: 241098F7) and PE-Conjugated AffiniPure Goat Anti-Rabbit IgG(H+L) (red), or Isotype Control (blue). Cells were not fixed. This data was developed using the same antibody clone with 98123-1-PBS in a different storage buffer formulation.