

For Research Use Only

Anti-Human Neprilysin/CD10 Rabbit Recombinant Antibody

Catalog Number: 98116-1-RR



Basic Information

Catalog Number: 98116-1-RR	GenBank Accession Number: BC101658	Purification Method: Protein A purification
Size: 100ug , 1000 µg/ml	GeneID (NCBI): 4311	CloneNo.: 241322E1
Source: Rabbit	UNIPROT ID: P08473	
Isotype: IgG	Full Name: membrane metallo-endoropeptidase	
	Calculated MW: 750 aa, 86 kDa	

Applications

Tested Applications:
FC

Species Specificity:
human

Background Information

CD10, also known as neprilysin, membrane metallo-endoropeptidase (MME), neutral endopeptidase (NEP), or common acute lymphoblastic leukemia antigen (CALLA), is a 100-kDa type II transmembrane glycoprotein belonging to peptidase M13 family (PMID: 7760013; 8102558). Among hematopoietic cells, CD10 is expressed on granulocytes, B cell precursors, mature germinal center B cells, a subset of immature thymocytes (PMID: 13679451). CD10 is also expressed on a variety of nonhematopoietic cell types, including bronchial epithelial cells, cultured fibroblasts, bone marrow stromal cells, renal proximal tubular epithelial cells, breast myoepithelium, biliary canaliculi (PMID: 8102558). CD10 is a cell surface peptidase that cleaves peptide bonds on the amino side of hydrophobic amino acids and inactivates a variety of physiologically active peptides. Loss or decreases in CD10 expression have been reported in a variety of malignancies (PMID: 16054017).

Storage

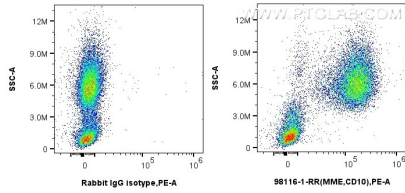
Storage:
Store at 2 - 8°C. Stable for one year after shipment.

Storage Buffer:
PBS with 0.09% sodium azide, pH 7.3.

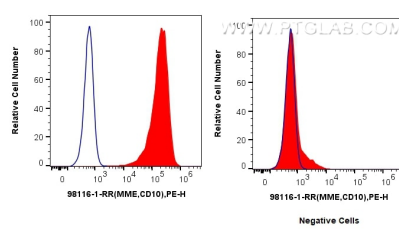
For technical support and original validation data for this product please contact:
T: 1 (888) 4PTGLAB (1-888-478-4522) (toll free in USA), or 1(312) 455-8498 (outside USA) E: proteintech@ptglab.com
W: ptglab.com

This product is exclusively available under Proteintech Group brand and is not available to purchase from any other manufacturer.

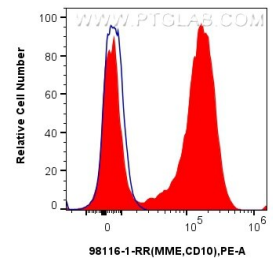
Selected Validation Data



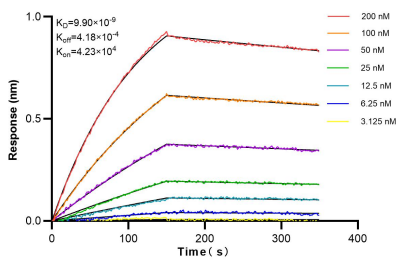
1x10⁶ human peripheral blood leukocytes were surface stained with 0.25 ug Anti-Human Neprilysin/CD10 Rabbit Recombinant Antibody (98116-1-RR, Clone: 241322E1) or Isotype Control and PE-conjugated Goat Anti-Rabbit IgG. Cells were not fixed.



1x10⁶ Reh cells (left) or Jurkat cells (right) were surface stained with 0.25 ug Anti-Human Neprilysin/CD10 Rabbit Recombinant Antibody (98116-1-RR, Clone: 241322E1) and PE-Conjugated AffiniPure Goat Anti-Rabbit IgG(H+L) (red), or 0.25 ug Isotype Control (blue). Cells were not fixed.



1x10⁶ human peripheral blood leukocytes were surface stained with 0.25 ug Anti-Human Neprilysin/CD10 Rabbit Recombinant Antibody (98116-1-RR, Clone:241322E1)(red) or Isotype Control (blue) and PE-conjugated Goat Anti-Rabbit IgG. Cells were not fixed.



Bi-layer interferometry (BLI) kinetic assays of 98116-1-RR against Human CD10 were performed. The affinity constant is 9.9 nM.