

For Research Use Only

# Anti-Human TIM3 Rabbit Recombinant Antibody, PBS Only

Catalog Number: 98115-1-PBS



## Basic Information

<b>Catalog Number:</b> 98115-1-PBS	<b>GenBank Accession Number:</b> BC020843	<b>Purification Method:</b> Protein A purification
<b>Size:</b> 1mg, 2 mg/ml	<b>GeneID (NCBI):</b> 84868	<b>CloneNo.:</b> 241422H1
<b>Source:</b> Rabbit	<b>UNIPROT ID:</b> Q8TDQ0	
<b>Isotype:</b> IgG	<b>Full Name:</b> hepatitis A virus cellular receptor 2	
	<b>Calculated MW:</b> 301 aa, 33 kDa	

## Applications

**Tested Applications:**  
FC

**Species Specificity:**  
human

## Background Information

TIM3, also known as HAVCR2, is a member of the recently discovered T cell Ig and mucin domain-containing molecule superfamily. TIM3 is a negative regulatory molecule that is important for T cell tolerance and has a crucial role in autoimmunity and T cell exhaustion during chronic viral infection (PMID: 23180819). TIM3 is expressed by T-helper type 1 (Th1) cells, macrophage, monocyte, dendritic cells, CD8+ T cell and other lymphocyte subsets. Galectin-9 is a ligand for TIM3. TIM3-galectin-9 pathway negatively regulates T helper type 1 immunity (PMID: 16286920).

## Storage

**Storage:**  
Store at -80°C.

**Storage Buffer:**  
PBS Only

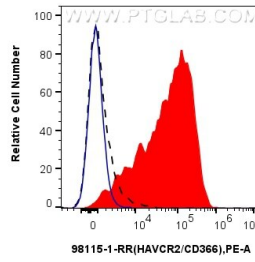
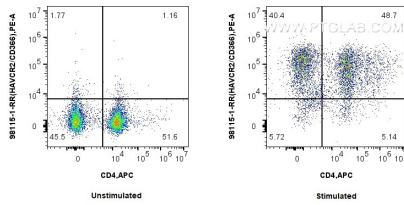
For technical support and original validation data for this product please contact:

T: 1 (888) 4PTGLAB (1-888-478-4522) (toll free in USA), or 1(312) 455-8498 (outside USA)

E: [proteintech@ptglab.com](mailto:proteintech@ptglab.com)  
W: [ptglab.com](http://ptglab.com)

This product is exclusively available under Proteintech Group brand and is not available to purchase from any other manufacturer.

## Selected Validation Data



1x10<sup>6</sup> untreated or anti-CD3/CD28 treated human PBMCs were surface stained with 0.25 ug Anti-Human TIM3 Rabbit Recombinant Antibody (98115-1-RR, Clone: 241422H1) or 0.25 ug Isotype Control, and PE-Conjugated AffiniPure Goat Anti-Rabbit IgG(H+L). Cells were co-stained with APC Anti-Human CD4 (RPA-T4) (APC-65143, Clone: RPA-T4). Cells were not fixed. This data was developed using the same antibody clone with 98115-1-PBS in a different storage buffer formulation.



1x10<sup>6</sup> anti-CD3/CD28 treated human PBMCs were surface stained with 0.25 ug Anti-Human TIM3 Rabbit Recombinant Antibody (98115-1-RR, Clone: 241422H1) (red) or 0.25 ug Isotype Control (blue), and PE-Conjugated AffiniPure Goat Anti-Rabbit IgG(H+L). 1x10<sup>6</sup> untreated human PBMCs were surface stained with 0.25 ug Anti-Human TIM3 Rabbit Recombinant Antibody (98115-1-RR, Clone: 241422H1) and PE-Conjugated AffiniPure Goat Anti-Rabbit IgG(H+L) (black, dashed). Cells were not fixed.

