

For Research Use Only

Anti-Human CD84 Rabbit Recombinant Antibody, PBS Only

Catalog Number: 98108-1-PBS



Basic Information

| | | |
|---------------------------------------|--|---|
| Catalog Number: 98108-1-PBS | GenBank Accession Number: BC020063 | Purification Method: Protein A purification |
| Size: 1mg, 2mg/ml | GeneID (NCBI): 8832 | CloneNo.: 241345A3 |
| Source: Rabbit | UNIPROT ID: Q9UIB8 | |
| Isotype: IgG | Full Name: CD84 molecule | |
| | Calculated MW: 345 aa, 39 kDa | |

Applications

Tested Applications:
FC, Cytometric bead array, Sandwich ELISA, Indirect ELISA, Sample test

Species Specificity:
human

Product Information

98108-1-PBS targets CD84 as part of a matched antibody pair:

MP01112-1: 98108-1-PBS capture and 84245-2-PBS detection (validated in Cytometric bead array)

MP01112-2: 84245-1-PBS capture and 98108-1-PBS detection (validated in Cytometric bead array, Sandwich ELISA)

Unconjugated rabbit recombinant monoclonal antibody in PBS only (BSA and azide free) storage buffer at a concentration of 1 mg/mL, ready for conjugation. Created using Proteintech's proprietary in-house recombinant technology. Recombinant production enables unrivalled batch-to-batch consistency, easy scale-up, and future security of supply.

This conjugation ready format makes antibodies ideal for use in many applications including: ELISAs, multiplex assays requiring matched pairs, mass cytometry, and multiplex imaging applications. Antibody use should be optimized by the end user for each application and assay.

Background Information

CD84, also known as SLAMF5, is a member of the CD2 subfamily of the immunoglobulin receptor superfamily (PMID: 9310491). CD84 is a single-chain type-I glycoprotein composed of two extracellular Ig-like domains, a hydrophobic transmembrane region, and a cytoplasmic domain. It is broadly expressed on almost all leukocyte subsets. CD84 functions as a homophilic adhesion molecule, whose signaling can activate or inhibit leukocyte function depending on the cell type and its stage of activation or differentiation (PMID: 30522694).

Storage

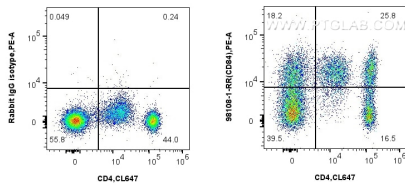
Storage:
Store at -80°C.

Storage Buffer:
PBS Only

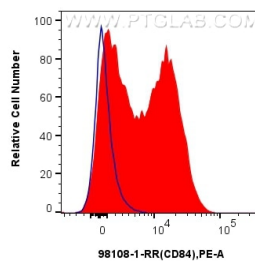
For technical support and original validation data for this product please contact:
T: 1 (888) 4PTGLAB (1-888-478-4522) (toll free in USA), or 1(312) 455-8498 (outside USA) E: proteintech@ptglab.com W: ptglab.com

This product is exclusively available under Proteintech Group brand and is not available to purchase from any other manufacturer.

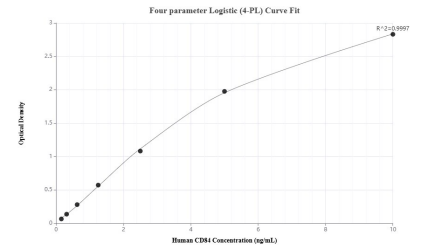
Selected Validation Data



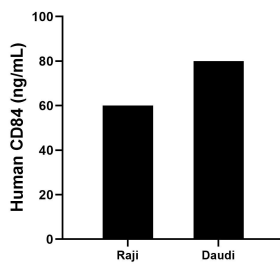
1x10⁶ human PBMCs were surface stained with 0.25 ug Anti-Human CD84 Rabbit Recombinant Antibody (98108-1-RR, Clone: 241345A3) or Isotype Control, and PE-Conjugated AffiniPure Goat Anti-Rabbit IgG(H+L). Cells were then stained with CoraLite® Plus 647 Anti-Human CD4 (OKT4). Cells were incubated with FC Receptor Block prior to staining. Cells were not fixed. This data was developed using the same antibody clone with 98108-1-PBS in a



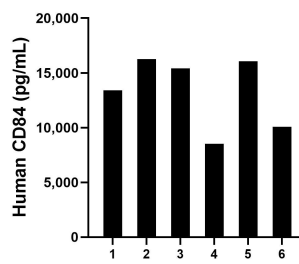
1x10⁶ human PBMCs were surface stained with 0.25 ug Anti-Human CD84 Rabbit Recombinant Antibody (98108-1-RR, Clone: 241345A3) or Isotype Control, and PE-Conjugated AffiniPure Goat Anti-Rabbit IgG(H+L). Cells were incubated with FC Receptor Block prior to staining. Cells were not fixed. This data was developed using the same antibody clone with 98108-1-PBS in a different storage buffer formulation.



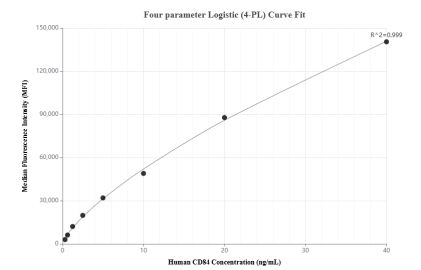
Sandwich ELISA standard curve of MP01112-2, Human CD84 Recombinant Matched Antibody Pair - PBS only. 84245-1-PBS was coated to a plate as the capture antibody and incubated with serial dilutions of standard RP02347. 98108-1-PBS was HRP conjugated as the detection antibody. Range: 0.156-10 ng/mL



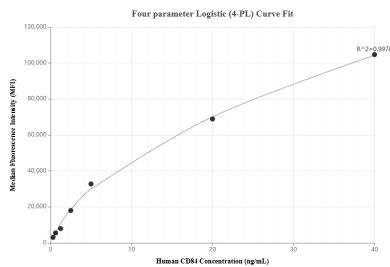
The mean CD84 concentration was determined to be 59.65 ng/mL in Raji cell extract based on a 1.0 mg/mL extract load and 79.95 ng/mL in Daudi cell extract based on a 1.8 mg/mL extract load.



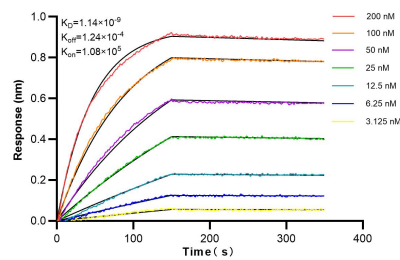
Serum of six individual healthy human donors was measured. The human CD84 concentration of detected samples was determined to be 13,292.9 pg/mL with a range of 8,538.9 - 16,254.6 pg/mL.



Cytometric bead array standard curve of MP01112-1, CD84 Recombinant Matched Antibody Pair, PBS Only. Capture antibody: 98108-1-PBS. Detection antibody: 84245-2-PBS. Standard: RP02347. Range: 0.313-40 ng/mL.



Cytometric bead array standard curve of MP01112-2, CD84 Recombinant Matched Antibody Pair, PBS Only. Capture antibody: 84245-1-PBS. Detection antibody: 98108-1-PBS. Standard: RP02347. Range: 0.313-40 ng/mL.



Biolayer interferometry (BLI) kinetic assays of 98108-1-RR against Human CD84 were performed. The affinity constant is 1.14 nM.