

For Research Use Only

# Anti-Human CD89 Rabbit Recombinant Antibody, PBS Only

Catalog Number: 98105-1-PBS



## Basic Information

Catalog Number:

98105-1-PBS

Size:

1mg, 2mg/ml

Source:

Rabbit

Isotype:

IgG

GenBank Accession Number:

BC027953

GeneID (NCBI):

2204

UNIPROT ID:

P24071

Full Name:

Fc fragment of IgA, receptor for

Calculated MW:

287 aa, 32 kDa

Purification Method:

Protein A purification

CloneNo.:

241426E3

## Applications

Tested Applications:

FC

Species Specificity:

human

## Storage

Storage:

Store at -80°C.

Storage Buffer:

PBS Only

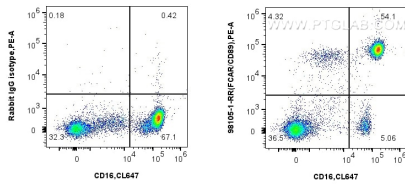
For technical support and original validation data for this product please contact:

T: 1 (888) 4PTGLAB (1-888-478-4522) (toll free in USA), or 1(312) 455-8498 (outside USA)

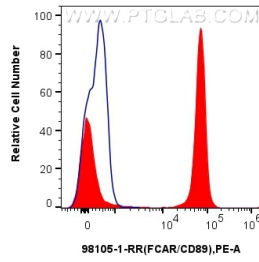
E: [proteintech@ptglab.com](mailto:proteintech@ptglab.com)  
W: [ptglab.com](http://ptglab.com)

This product is exclusively available under Proteintech Group brand and is not available to purchase from any other manufacturer.

## Selected Validation Data



1x10<sup>6</sup> human peripheral blood leukocytes were surface stained with 0.25 ug Anti-Human CD89 Rabbit Recombinant Antibody (98105-1-RR, Clone: 241426E3) or 0.25 ug Isotype Control, and PE-Conjugated AffiniPure Goat Anti-Rabbit IgG(H+L). Cells were co-stained with CoraLite® Plus 647 Anti-Human CD16 (3G8). Cells were incubated with FC Receptor Block prior to staining. Cells were not fixed. This data was developed using the same antibody clone with 98105-1-PBS in a



1x10<sup>6</sup> human peripheral blood leukocytes were surface stained with 0.25 ug Anti-Human CD89 Rabbit Recombinant Antibody (98105-1-RR, Clone: 241426E3) (red) or 0.25 ug Isotype Control (blue), and PE-Conjugated AffiniPure Goat Anti-Rabbit IgG(H+L). Cells were incubated with FC Receptor Block prior to staining. Cells were not fixed. This data was developed using the same antibody clone with 98105-1-PBS in a different storage buffer formulation.