

For Research Use Only

# Anti-Human CD8b Rabbit Recombinant Antibody

Catalog Number: 98103-1-RR



## Basic Information

<b>Catalog Number:</b> 98103-1-RR	<b>GenBank Accession Number:</b> BC100913	<b>Purification Method:</b> Protein A purification
<b>Size:</b> 100ug , 1000 µg/ml	<b>GeneID (NCBI):</b> 926	<b>CloneNo.:</b> 241326A7
<b>Source:</b> Rabbit	<b>UNIPROT ID:</b> P10966	
<b>Isotype:</b> IgG	<b>Full Name:</b> CD8b molecule	
	<b>Calculated MW:</b> 243 aa, 27 kDa	

## Applications

**Tested Applications:**  
FC

**Species Specificity:**  
human

## Background Information

CD8b (T-cell surface glycoprotein CD8 beta chain) is an integral membrane glycoprotein that forms disulfide-linked heterodimers with CD8a (CD8 alpha chain). The CD8 alpha/beta heterodimer is the predominant CD8 complex expressed on the cell surface (PMID: 1534146; 2111591). CD8 is a transmembrane glycoprotein predominantly expressed on the surface of cytotoxic T cells and can also be found on natural killer cells, cortical thymocytes, and dendritic cells. CD8 serves as a co-receptor for the T cell receptor (TCR). Both CD8 and TCR recognize antigens displayed by an antigen presenting cell (APC) in the context of class I MHC molecules. CD8 plays a role in T cell development and activation of mature T cells.

## Storage

**Storage:**  
Store at 2 - 8°C. Stable for one year after shipment.

**Storage Buffer:**  
PBS with 0.09% sodium azide, pH 7.3.

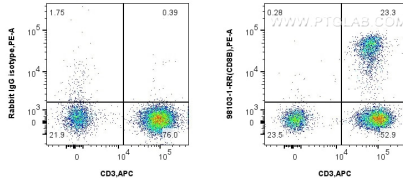
For technical support and original validation data for this product please contact:

T: 1 (888) 4PTGLAB (1-888-478-4522) (toll free in USA), or 1(312) 455-8498 (outside USA)

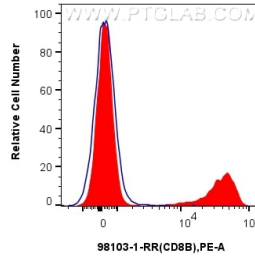
E: [proteintech@ptglab.com](mailto:proteintech@ptglab.com)  
W: [ptglab.com](http://ptglab.com)

**This product is exclusively available under Proteintech Group brand and is not available to purchase from any other manufacturer.**

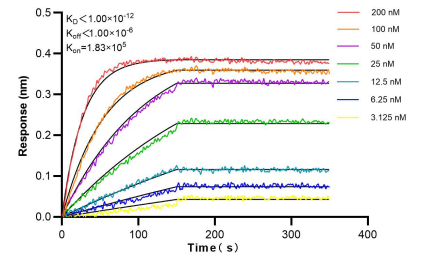
## Selected Validation Data



1x10<sup>6</sup> human PBMCs were surface stained with 0.25 ug Anti-Human CD8b Rabbit Recombinant Antibody (98103-1-RR, Clone: 241326A7) or Isotype Control, and PE-Conjugated Goat Anti-Rabbit IgG(H+L). Cells were co-stained with APC Anti-Human CD3. Cells were not fixed.



1x10<sup>6</sup> human PBMCs were surface stained with 0.25 ug Anti-Human CD8b Rabbit Recombinant Antibody (98103-1-RR, Clone: 241326A7)(red), or Isotype Control (blue) and PE-Conjugated Goat Anti-Rabbit IgG(H+L). Cells were not fixed.



Bi-layer interferometry (BLI) kinetic assays of 98103-1-RR against Human CD8b were performed. The affinity constant is below 1 pM.