

For Research Use Only

Anti-Human CD39/ENTPD1 Rabbit Recombinant Antibody, PBS Only (Capture/Detector)

Catalog Number: 98102-1-PBS



Basic Information

Catalog Number: 98102-1-PBS	GenBank Accession Number: BC047664	Purification Method: Protein A purification
Size: 1mg, 2mg/ml	GeneID (NCBI): 953	CloneNo.: 241292G7
Source: Rabbit	UNIPROT ID: P49961	
Isotype: IgG	Full Name: ectonucleoside triphosphate diphosphohydrolase 1	
	Calculated MW: 58 kDa	

Applications

Tested Applications:
FC, Cytometric bead array, Sandwich ELISA, Indirect ELISA, Sample test

Species Specificity:
human

Product Information

98102-1-PBS targets CD39/ENTPD1 as part of a matched antibody pair:

MP01143-1: 98102-1-PBS capture and 84235-2-PBS detection (validated in Cytometric bead array, Sandwich ELISA)

MP01143-2: 98102-1-PBS capture and 84235-1-PBS detection (validated in Cytometric bead array)

MP01143-3: 84235-3-PBS capture and 98102-1-PBS detection (validated in Cytometric bead array)

Unconjugated rabbit recombinant monoclonal antibody in PBS only (BSA and azide free) storage buffer at a concentration of 1 mg/mL, ready for conjugation. Created using Proteintech's proprietary in-house recombinant technology. Recombinant production enables unrivalled batch-to-batch consistency, easy scale-up, and future security of supply.

This conjugation ready format makes antibodies ideal for use in many applications including: ELISAs, multiplex assays requiring matched pairs, mass cytometry, and multiplex imaging applications. Antibody use should be optimized by the end user for each application and assay.

Background Information

ENTPD1 (Ectonucleoside triphosphate diphosphohydrolase 1) is also named CD39, NTPDase 1, and Ecto-ATPDase 1 and belongs to the GDA1/CD39 NTPase family. In the nervous system, it can hydrolyze ATP and other nucleotides to regulate purinergic neurotransmission. It is a noncovalent tetrameric protein and detergent inhibition of enzymatic activity is caused by dissociation of ectoapyrase tetramers into monomers (PMID: 9733785).

Storage

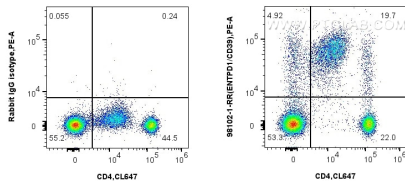
Storage:
Store at -80°C.

Storage Buffer:
PBS Only

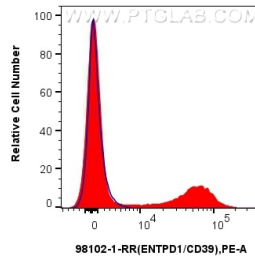
For technical support and original validation data for this product please contact:
T: 1 (888) 4PTGLAB (1-888-478-4522) (toll free in USA), or 1(312) 455-8498 (outside USA)
E: proteintech@ptglab.com
W: ptglab.com

This product is exclusively available under Proteintech Group brand and is not available to purchase from any other manufacturer.

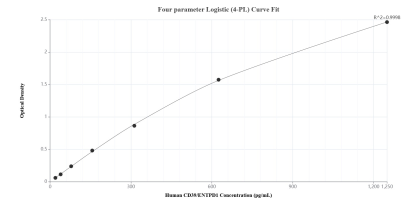
Selected Validation Data



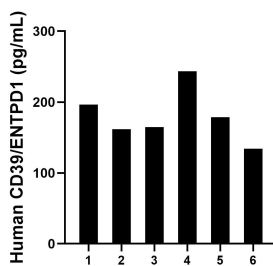
1x10⁶ human PBMCs were surface stained with 0.25 ug Anti-Human CD39/ENTPD1 Rabbit Recombinant Antibody (98102-1-RR, Clone: 241292G7) or Isotype Control, and PE-Conjugated AffiniPure Goat Anti-Rabbit IgG(H+L). Cells were co-stained with CoraLite® Plus 647 Anti-Human CD4 (OKT4). Cells were incubated with FC Receptor Block prior to staining. Cells were not fixed. This data was developed using the same antibody clone with 98102-1-PBS in a



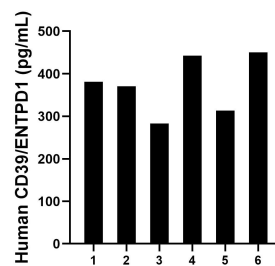
1x10⁶ human PBMCs were surface stained with 0.25 ug Anti-Human CD39/ENTPD1 Rabbit Recombinant Antibody (98102-1-RR, Clone: 241292G7) or Isotype Control, and PE-Conjugated AffiniPure Goat Anti-Rabbit IgG(H+L). Cells were incubated with FC Receptor Block prior to staining. Cells were not fixed. This data was developed using the same antibody clone with 98102-1-PBS in a different storage buffer formulation.



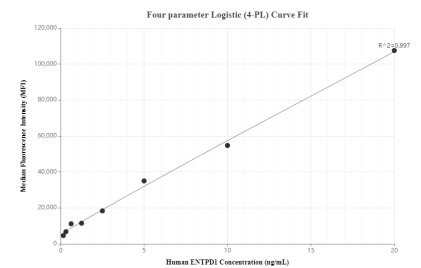
Sandwich ELISA standard curve of MP01143-1, Human CD39/ENTPD1 Recombinant Matched Antibody Pair - PBS only. 98102-1-PBS was coated to a plate as the capture antibody and incubated with serial dilutions of standard RPO2313. 84235-2-PBS was HRP conjugated as the detection antibody. Range: 19.5-1250 pg/mL



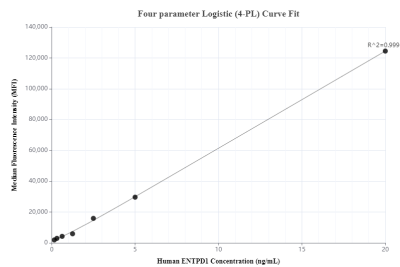
Plasma of six individual healthy human donors was measured. The CD39/ENTPD1 concentration of detected samples was determined to be 179.9 pg/mL with a range of 134.2-243.6 ng/mL



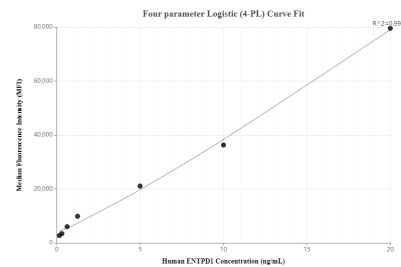
Serum of six individual healthy human donors was measured. The CD39/ENTPD1 concentration of detected samples was determined to be 373.5 pg/mL with a range of 283.0-450.4 pg/mL



Cytometric bead array standard curve of MP01143-1, ENTDP1/CD39 Recombinant Matched Antibody Pair, PBS Only. Capture antibody: 98102-1-PBS. Detection antibody: 84235-2-PBS. Standard: RPO2313. Range: 0.156-20 ng/mL



Cytometric bead array standard curve of MP01143-2, ENTDP1/CD39 Recombinant Matched Antibody Pair, PBS Only. Capture antibody: 98102-1-PBS. Detection antibody: 84235-1-PBS. Standard: RPO2313. Range: 0.156-20 ng/mL



Cytometric bead array standard curve of MP01143-3, ENTDP1/CD39 Recombinant Matched Antibody Pair, PBS Only. Capture antibody: 84235-3-PBS. Detection antibody: 98102-1-PBS. Standard: RPO2313. Range: 0.156-20 ng/mL