

For Research Use Only

Anti-Human CD22 Rabbit Recombinant Antibody

Catalog Number: 98092-1-RR



Basic Information

Catalog Number:

98092-1-RR

Size:

100ug, 1000 µg/ml

Source:

Rabbit

Isotype:

IgG

GenBank Accession Number:

BC109306

GeneID (NCBI):

933

UNIPROT ID:

P20273

Full Name:

CD22 molecule

Calculated MW:

847 aa, 95 kDa

Purification Method:

Protein A purification

CloneNo.:

241315A1

Applications

Tested Applications:

FC

Species Specificity:

human

Background Information

CD22, also known as Siglec-2 (sialic acid binding Ig-like lectin 2) or BL-CAM (B-lymphocyte cell adhesion molecule), is a 130-140 kDa, B-cell restricted, type I transmembrane glycoprotein belonging to the immunoglobulin gene superfamily. The expression of CD22 is developmentally regulated. It is expressed at low levels in the cytoplasm of pro-B and pre-B cells and present on the cell surface only at mature stages of B-cell differentiation. Cell surface expression is lost during terminal differentiation into plasma cell and after B-cell activation. CD22 is an inhibitory receptor for B-cell receptor (BCR) signalling, preferentially binds to alpha-2,6-linked sialic acid and mediates B-cell B-cell interactions. It plays a crucial role in activation and differentiation of the B-cell.

Storage

Storage:

Store at 2 - 8°C. Stable for one year after shipment.

Storage Buffer:

PBS with 0.09% sodium azide, pH 7.3.

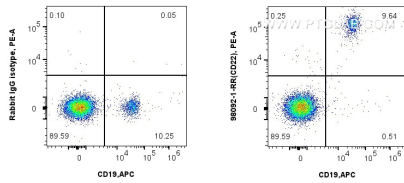
For technical support and original validation data for this product please contact:

T: 1 (888) 4PTGLAB (1-888-478-4522) (toll free in USA), or 1(312) 455-8498 (outside USA)

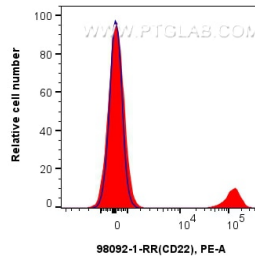
E: proteintech@ptglab.com
W: ptglab.com

This product is exclusively available under Proteintech Group brand and is not available to purchase from any other manufacturer.

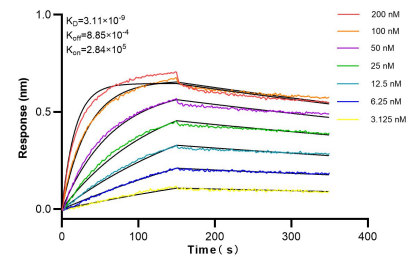
Selected Validation Data



1x10⁶ human PBMCs were surface stained with 0.25 ug Anti-Human CD22 Rabbit Recombinant Antibody (98092-1-RR, Clone:241315A1) or Isotype Control and PE-conjugated Goat Anti-Rabbit IgG. Cells were then stained with CoraLite® Plus 647 Anti-Human CD19 (4G7) Mouse IgG2a Recombinant Antibody (CL647-65562, Clone: 4G7). Cells were not fixed. Lymphocytes were gated.



1x10⁶ human PBMCs were surface stained with 0.25 ug Anti-Human CD22 Rabbit Recombinant Antibody (98092-1-RR, Clone:241315A1) or Isotype Control and PE-conjugated Goat Anti-Rabbit IgG. Cells were not fixed.



Biolayer interferometry (BLI) kinetic assays of 98092-1-RR against Human CD22 were performed. The affinity constant is 3.11 nM.