

For Research Use Only

# Anti-Human CD200 Rabbit Recombinant Antibody, PBS Only

Catalog Number: 98091-2-PBS



## Basic Information

Catalog Number:

98091-2-PBS

Size:

1mg, 2 mg/ml

Source:

Rabbit

Isotype:

IgG

GenBank Accession Number:

BC022522

GeneID (NCBI):

4345

UNIPROT ID:

P41217

Full Name:

CD200 molecule

Calculated MW:

269 aa, 30 kDa

Purification Method:

Protein A purification

CloneNo.:

241329G4

## Applications

Tested Applications:

FC

Species Specificity:

human

## Background Information

CD200, also known as OX2, is a type I transmembrane glycoprotein that belongs to the immunoglobulin superfamily (PMID: 3032785). It contains two extracellular immunoglobulin domains, a transmembrane and a cytoplasmic domain. CD200 is expressed on a variety of cell types, including thymocytes, B lymphocytes, a subset of T lymphocytes, follicular dendritic cells, neurons, and endothelial cells (PMID: 3032785; 10981966). CD200 binds to its receptor, CD200R, which is primarily expressed by myeloid and T cell lineage (PMID: 15187158). The CD200-CD200R interaction plays a role in immunosuppression and suppression of anti-tumor immune responses (PMID: 22020332).

## Storage

Storage:

Store at -80°C.

Storage Buffer:

PBS Only

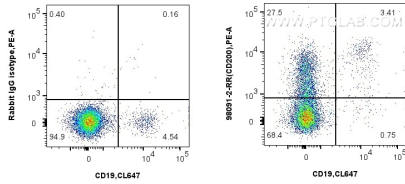
For technical support and original validation data for this product please contact:

T: 1 (888) 4PTGLAB (1-888-478-4522) (toll free  
in USA), or 1(312) 455-8498 (outside USA)

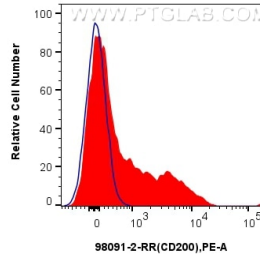
E: [proteintech@ptglab.com](mailto:proteintech@ptglab.com)  
W: [ptglab.com](http://ptglab.com)

**This product is exclusively available under Proteintech Group brand and is not available to purchase from any other manufacturer.**

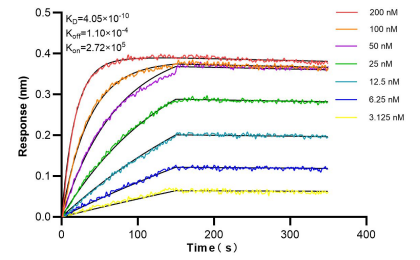
## Selected Validation Data



1x10<sup>6</sup> human PBMCs were surface stained with 0.25 ug Anti-Human CD200 Rabbit Recombinant Antibody (98091-2-RR, Clone: 241329G4) or Isotype Control, and PE-Conjugated Goat Anti-Rabbit IgG(H+L). Cells were co-stained with CoraLite® Plus 647 Anti-Human CD19 (4G7) Mouse IgG2a Recombinant Antibody (CL647-65562, Clone: 4G7). Cells were not fixed. Lymphocytes were gated. This data was developed using the same antibody clone with 98091-2-PBS



1x10<sup>6</sup> human PBMCs were surface stained with 0.25 ug Anti-Human CD200 Rabbit Recombinant Antibody (98091-2-RR, Clone: 241329G4) or Isotype Control (blue), and PE-Conjugated Goat Anti-Rabbit IgG(H+L). Cells were not fixed. Lymphocytes were gated. This data was developed using the same antibody clone with 98091-2-PBS in a different storage buffer formulation.



Bi-layer interferometry (BLI) kinetic assays of 98091-2-RR against Human CD200 were performed. The affinity constant is 0.405 nM.