

For Research Use Only

# Anti-Mouse IL-6 Rabbit Recombinant Antibody

Catalog Number: 98089-1-RR



## Basic Information

<b>Catalog Number:</b> 98089-1-RR	<b>GenBank Accession Number:</b> NM_031168	<b>Purification Method:</b> Protein A purification
<b>Size:</b> 100ug , 1000 µg/ml	<b>GeneID (NCBI):</b> 16193	<b>CloneNo.:</b> 240701E8
<b>Source:</b> Rabbit	<b>UNIPROT ID:</b> P08505	
<b>Isotype:</b> IgG	<b>Full Name:</b> interleukin 6	
	<b>Calculated MW:</b> 24 kDa	

## Applications

**Tested Applications:**  
FC (Intra)

**Species Specificity:**  
mouse

## Background Information

Interleukin-6 (IL-6) is an interleukin that acts as both a pro-inflammatory and anti-inflammatory cytokine. IL-6 protein is secreted by a variety of cell types including T cells and macrophages as phosphorylated and variably glycosylated molecule. IL-6 plays an essential role in the final differentiation of B-cells into Ig-secreting cells involved in lymphocyte and monocyte differentiation. It induces myeloma and plasmacytoma growth and induces nerve cells differentiation Acts on B-cells, T-cells, hepatocytes, hematopoietic progenitor cells and cells of the CNS. IL-6 is also considered a myokine, a cytokine produced from muscle, and is elevated in response to muscle contraction. IL-6 has been shown to interact with interleukin-6 receptor and glycoprotein 130. Additionally, IL-6 is involved in hematopoiesis, bone metabolism, and cancer progression, and has been defined an essential role in directing transition from innate to acquired immunity.

## Storage

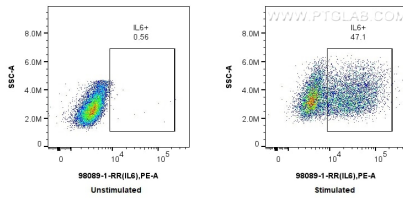
**Storage:**  
Store at 2 - 8°C. Stable for one year after shipment.

**Storage Buffer:**  
PBS with 0.09% sodium azide, pH 7.3.

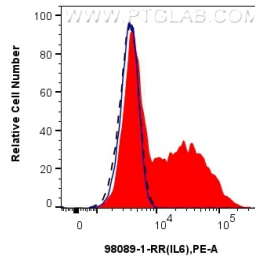
For technical support and original validation data for this product please contact:  
T: 1 (888) 4PTGLAB (1-888-478-4522) (toll free in USA), or 1(312) 455-8498 (outside USA)      E: proteintech@ptglab.com  
W: ptglab.com

This product is exclusively available under Proteintech Group brand and is not available to purchase from any other manufacturer.

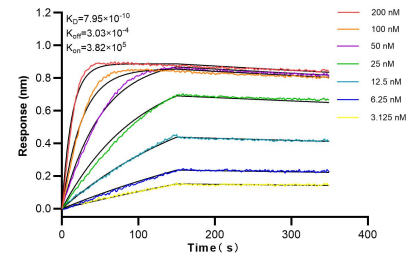
## Selected Validation Data



1x10<sup>6</sup> LPS treated RAW 264.7 cells were intracellularly stained with 0.25 ug Anti-Mouse IL-6 Rabbit Recombinant Antibody (98089-1-RR, Clone:240701E8) and PE-Conjugated AffiniPure Goat Anti-Rabbit IgG(H+L), or 1x10<sup>6</sup> untreated RAW 264.7 cells were intracellularly stained with 0.25 ug Anti-Mouse IL-6 Rabbit Recombinant Antibody (98089-1-RR, Clone:240701E8) and PE-Conjugated AffiniPure Goat Anti-Rabbit IgG(H+L). Cells were fixed with 4% PFA and



1x10<sup>6</sup> LPS treated RAW 264.7 cells were intracellularly stained with 0.25 ug Anti-Mouse IL-6 Rabbit Recombinant Antibody (98089-1-RR, Clone:240701E8) (red), or Isotype Control (blue), or 1x10<sup>6</sup> LPS treated RAW 264.7 cells were intracellularly stained with 0.25 ug Anti-Mouse IL-6 Rabbit Recombinant Antibody (98089-1-RR, Clone:240701E8) (green) and PE-Conjugated AffiniPure Goat Anti-Rabbit IgG(H+L). Cells were fixed with 4% PFA and permeabilized



Biolayer interferometry (BLI) kinetic assays of 98089-1-RR against Mouse IL-6 were performed. The affinity constant is 0.795 nM.