

For Research Use Only

Anti-Human CD23 Rabbit Recombinant Antibody

Catalog Number: 98088-1-RR



Basic Information

Catalog Number: 98088-1-RR	GenBank Accession Number: BC064417	Purification Method: Protein A purification
Size: 100ug , 1000 µg/ml	GeneID (NCBI): 2208	CloneNo.: 241270C6
Source: Rabbit	UNIPROT ID: P06734	
Isotype: IgG	Full Name: Fc fragment of IgE, low affinity II, receptor for (CD23)	
	Calculated MW: 321 aa, 36 kDa	

Applications

Tested Applications:
FC

Species Specificity:
human

Background Information

CD23, also known as low affinity immunoglobulin epsilon Fc receptor, is a transmembrane glycoprotein present on a subpopulation of B lymphocytes in germinal centres, EBV-transformed B-lymphoblastoid cell lines, follicular dendritic cells, and a subpopulation of peripheral blood cells. CD23 has essential roles in the regulation of IgE production and in the differentiation of B-cells.

Storage

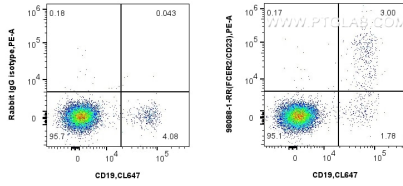
Storage:
Store at 2 - 8°C. Stable for one year after shipment.

Storage Buffer:
PBS with 0.09% sodium azide, pH 7.3.

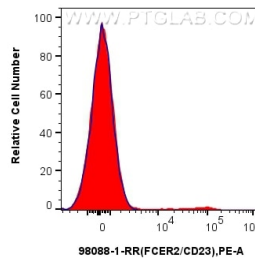
For technical support and original validation data for this product please contact:
T: 1 (888) 4PTGLAB (1-888-478-4522) (toll free in USA), or 1(312) 455-8498 (outside USA) E: proteintech@ptglab.com
W: ptglab.com

This product is exclusively available under Proteintech Group brand and is not available to purchase from any other manufacturer.

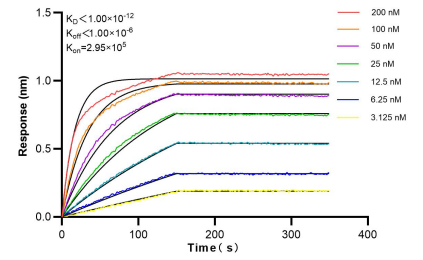
Selected Validation Data



1x10⁶ human PBMCs were surface stained with 0.25 ug Anti-Human CD23 Rabbit Recombinant Antibody (98088-1-RR, Clone:241270C6) or Isotype Control and PE-conjugated Goat Anti-Rabbit IgG. Cells were then stained with CoraLite® Plus 647 Anti-Human CD19 (4G7). Cells were not fixed. Lymphocytes were gated.



1x10⁶ human PBMCs were surface stained with 0.25 ug Anti-Human CD23 Rabbit Recombinant Antibody (98088-1-RR, Clone:241270C6) (red) or Isotype Control (blue) and PE-conjugated Goat Anti-Rabbit IgG. Cells were not fixed. Lymphocytes were gated.



Bi-layer interferometry (BLI) kinetic assays of 98088-1-RR against Human CD23 were performed. The affinity constant is below 1 pM.