

For Research Use Only

# Anti-Human CD23 Rabbit Recombinant Antibody, PBS Only

Catalog Number: 98088-1-PBS



## Basic Information

Catalog Number:

98088-1-PBS

Size:

1mg, 2mg/ml

Source:

Rabbit

Isotype:

IgG

GenBank Accession Number:

BC064417

GeneID (NCBI):

2208

UNIPROT ID:

P06734

Full Name:

Fc fragment of IgE, low affinity II, receptor for (CD23)

Calculated MW:

321 aa, 36 kDa

Purification Method:

Protein A purification

CloneNo.:

241270C6

## Applications

Tested Applications:

FC

Species Specificity:

human

## Background Information

CD23, also known as low affinity immunoglobulin epsilon Fc receptor, is a transmembrane glycoprotein present on a subpopulation of B lymphocytes in germinal centres, EBV-transformed B-lymphoblastoid cell lines, follicular dendritic cells, and a subpopulation of peripheral blood cells. CD23 has essential roles in the regulation of IgE production and in the differentiation of B-cells.

## Storage

Storage:

Store at -80°C.

Storage Buffer:

PBS Only

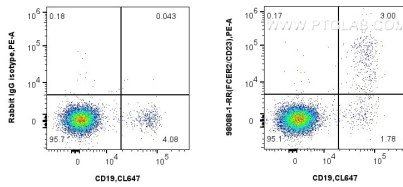
For technical support and original validation data for this product please contact:

T: 1 (888) 4PTGLAB (1-888-478-4522) (toll free in USA), or 1(312) 455-8498 (outside USA)

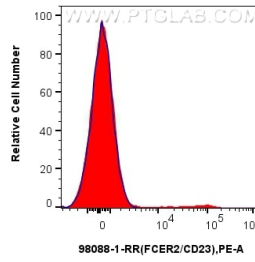
E: [proteintech@ptglab.com](mailto:proteintech@ptglab.com)  
W: [ptglab.com](http://ptglab.com)

This product is exclusively available under Proteintech Group brand and is not available to purchase from any other manufacturer.

## Selected Validation Data



1x10<sup>6</sup> human PBMCs were surface stained with 0.25 ug Anti-Human CD23 Rabbit Recombinant Antibody (98088-1-RR, Clone:241270C6) or Isotype Control and PE-conjugated Goat Anti-Rabbit IgG. Cells were then stained with CoraLite® Plus 647 Anti-Human CD19 (4G7). Cells were not fixed. Lymphocytes were gated. This data was developed using the same antibody clone with 98088-1-PBS in a different storage buffer formulation.



1x10<sup>6</sup> human PBMCs were surface stained with 0.25 ug Anti-Human CD23 Rabbit Recombinant Antibody (98088-1-RR, Clone:241270C6) (red) or Isotype Control (blue) and PE-conjugated Goat Anti-Rabbit IgG. Cells were not fixed. Lymphocytes were gated. This data was developed using the same antibody clone with 98088-1-PBS in a different storage buffer formulation.