

For Research Use Only

Anti-Human IL-6 Rabbit Recombinant Antibody, PBS Only

Catalog Number: 98087-1-PBS



Basic Information

Catalog Number: 98087-1-PBS	GenBank Accession Number: BC015511	Purification Method: Protein A purification
Size: 1mg, 2mg/ml	GeneID (NCBI): 3569	CloneNo.: 240670D12
Source: Rabbit	ENSEMBL Gene ID: ENSG00000136244	
Isotype: IgG	UNIPROT ID: P05231	
	Full Name: interleukin 6 (interferon, beta 2)	
	Calculated MW: 212 aa, 24 kDa	

Applications

Tested Applications:
FC (Intra)

Species Specificity:
human

Background Information

Interleukin-6 (IL-6) is an interleukin that acts as both a pro-inflammatory and anti-inflammatory cytokine. IL-6 protein is secreted by a variety of cell types including T cells and macrophages as phosphorylated and variably glycosylated molecule. IL-6 plays an essential role in the final differentiation of B-cells into Ig-secreting cells involved in lymphocyte and monocyte differentiation. It induces myeloma and plasmacytoma growth and induces nerve cells differentiation. Acts on B-cells, T-cells, hepatocytes, hematopoietic progenitor cells and cells of the CNS. IL-6 is also considered a myokine, a cytokine produced from muscle, and is elevated in response to muscle contraction. IL-6 has been shown to interact with interleukin-6 receptor and glycoprotein 130. Additionally, IL-6 is involved in hematopoiesis, bone metabolism, and cancer progression, and has been defined an essential role in directing transition from innate to acquired immunity.

Storage

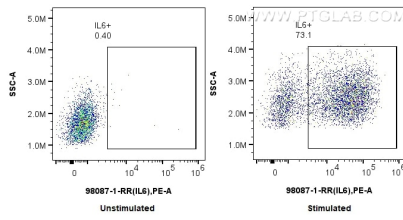
Storage:
Store at -80°C.

Storage Buffer:
PBS Only

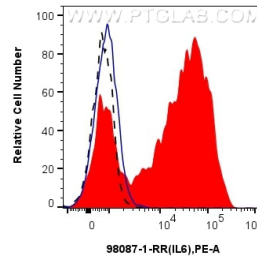
For technical support and original validation data for this product please contact:
T: 1 (888) 4PTGLAB (1-888-478-4522) (toll free in USA), or 1(312) 455-8498 (outside USA) E: proteintech@ptglab.com
W: ptglab.com

This product is exclusively available under Proteintech Group brand and is not available to purchase from any other manufacturer.

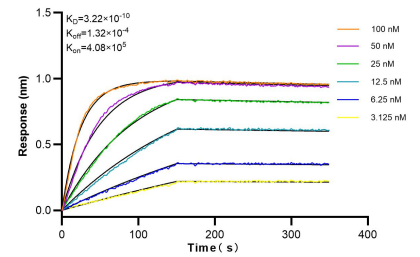
Selected Validation Data



1x10⁶ untreated or LPS and Brefeldin A treated human PBMCs were intracellularly stained with 0.25 ug Anti-Human IL-6 Rabbit Recombinant Antibody (98087-1-RR, Clone:240670D12) and PE-Conjugated AffiniPure Goat Anti-Rabbit IgG(H+L). Cells were fixed with 4% PFA and permeabilized with Flow Cytometry Perm Buffer (PF00011-C). Monocytes were gated. This data was developed using the same antibody clone with 98087-1-PBS in a different storage buffer



1x10⁶ LPS and Brefeldin A treated human PBMCs were intracellularly stained with 0.25 ug Anti-Human IL-6 Rabbit Recombinant Antibody (98087-1-RR, Clone:240670D12) (red) or Isotype Control (blue) and PE-Conjugated AffiniPure Goat Anti-Rabbit IgG(H+L)(red). 1x10⁶ untreated human PBMCs were intracellularly stained with 0.25 ug Anti-Human IL6 Rabbit Recombinant Antibody (98087-1-RR, Clone:240670D12) and PE-Conjugated AffiniPure Goat Anti-Rabbit



Bi-layer interferometry (BLI) kinetic assays of 98087-1-RR against Human IL-6 were performed. The affinity constant is 0.322 nM.