

For Research Use Only

Anti-Human SELPLG/CD162 Rabbit Recombinant Antibody, PBS Only

Catalog Number: 98084-1-PBS



Basic Information

Catalog Number:

98084-1-PBS

Size:

1mg, 2mg/ml

Source:

Rabbit

Isotype:

IgG

GenBank Accession Number:

BC029782

GeneID (NCBI):

6404

UNIPROT ID:

Q14242

Full Name:

selectin P ligand

Calculated MW:

412 aa, 43 kDa

Purification Method:

Protein A purification

CloneNo.:

241297F10

Applications

Tested Applications:

FC

Species Specificity:

human

Background Information

SELPLG (selectin P ligand), also known as CD162 or PSGL-1, is a 120 kDa type I transmembrane mucin-like glycoprotein. It is an adhesion molecule expressed on the surface of neutrophils, monocytes, and most lymphocytes as a homodimer of approximately 230-250 kDa (PMID: 7545173; 1378449; 9353350). SELPLG plays a critical role in the early stages of inflammation due to its ability to bind E-selectin (CD62E), L-selectin (CD62L), and P-selectin (CD62P) (PMID: 35597982).

Storage

Storage:

Store at -80°C.

Storage Buffer:

PBS Only

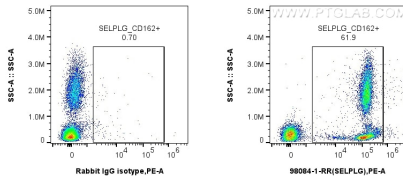
For technical support and original validation data for this product please contact:

T: 1 (888) 4PTGLAB (1-888-478-4522) (toll free in USA), or 1(312) 455-8498 (outside USA)

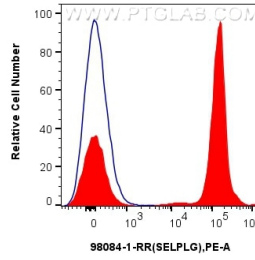
E: proteintech@ptglab.com
W: ptglab.com

This product is exclusively available under Proteintech Group brand and is not available to purchase from any other manufacturer.

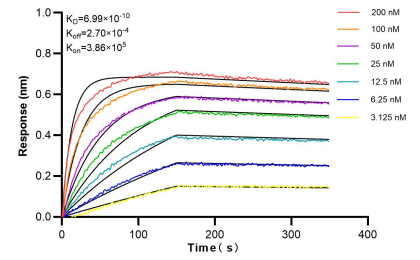
Selected Validation Data



1x10⁶ human peripheral blood leukocytes were surface stained with 0.25 ug Anti-Human SELPLG/CD162 Rabbit Recombinant Antibody (98084-1-RR, Clone:241297F10), or Isotype Control and PE-Conjugated AffiniPure Goat Anti-Rabbit IgG(H+L). Cells were incubated with FC Receptor Block prior to fixing and staining. Cells were not fixed. This data was developed using the same antibody clone with 98084-1-PBS in a different storage buffer formulation.



1x10⁶ human peripheral blood leukocytes were surface stained with 0.25 ug Anti-Human SELPLG/CD162 Rabbit Recombinant Antibody (98084-1-RR, Clone:241297F10), or Isotype Control (blue) and PE-Conjugated AffiniPure Goat Anti-Rabbit IgG(H+L). Cells were incubated with FC Receptor Block prior to fixing and staining. Cells were not fixed. This data was developed using the same antibody clone with 98084-1-PBS in a different storage buffer formulation.



Bi-layer interferometry (BLI) kinetic assays of 98084-1-RR against Human SELPLG/CD162 were performed. The affinity constant is 0.699 nM.