

For Research Use Only

Anti-Human CLEC12A Rabbit Recombinant Antibody

Catalog Number: 98083-1-RR



Basic Information

Catalog Number: 98083-1-RR	GenBank Accession Number: BC126291	Purification Method: Protein A purification
Size: 100ug , 1000 µg/ml	GeneID (NCBI): 160364	CloneNo.: 240791B7
Source: Rabbit	UNIPROT ID: Q5QGZ9	
Isotype: IgG	Full Name: C-type lectin domain family 12, member A	
	Calculated MW: 31 kDa	

Applications

Tested Applications:
FC

Species Specificity:
human

Background Information

CLEC12A, also known as CD371, M1CL, DCAL-2 or CLL-1, is a type II transmembrane glycoprotein and a member of the C-type lectin superfamily (PMID: 30401586). This protein, which contains a single C-type lectin-like domain and a cytoplasmic immunoreceptor tyrosine-based inhibitory motif (ITIM), is related to LOX-1 and Dectin-1 and is variably spliced and highly N-glycosylated (PMID: 14739280). Its ITIM sequence recruits the tyrosine phosphatases SHP-1 and SHP-2 to negatively regulate Syk signaling. In humans, CLEC12A is mainly expressed on myeloid cells, being found on monocytes, granulocytes, macrophages and DC subsets, and at lower levels on CD4+ T cells (PMID: 32477350). The observed molecular weight of CLEC12A is between 40 and 75 kDa, which is much higher than the predicted molecular weight due to glycosylation (PMID: 14739280).

Storage

Storage:
Store at 2 - 8°C. Stable for one year after shipment.

Storage Buffer:
PBS with 0.09% sodium azide, pH 7.3.

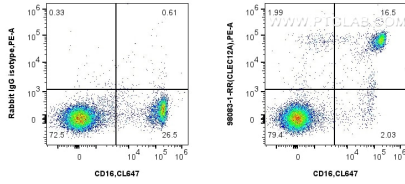
For technical support and original validation data for this product please contact:

T: 1 (888) 4PTGLAB (1-888-478-4522) (toll free in USA), or 1(312) 455-8498 (outside USA)

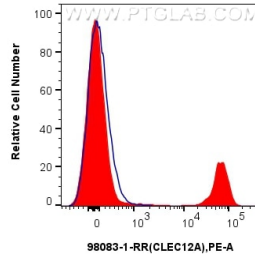
E: proteintech@ptglab.com
W: ptglab.com

This product is exclusively available under Proteintech Group brand and is not available to purchase from any other manufacturer.

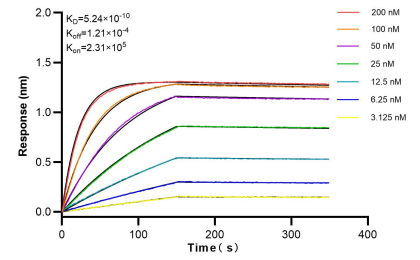
Selected Validation Data



1x10⁶ human peripheral blood leukocytes were surface stained with 0.25 ug Anti-Human CLEC12A Rabbit Recombinant Antibody (98083-1-RR, Clone:240791B7), or Isotype Control and PE-Conjugated AffiniPure Goat Anti-Rabbit IgG(H+L). Cells were then stained with CoraLite® Plus 647 Anti-Human CD16. Cells were incubated with FC Receptor Block prior to fixing and staining. Cells were not fixed.



1x10⁶ human peripheral blood leukocytes were surface stained with 0.25 ug Anti-Human CLEC12A Rabbit Recombinant Antibody (98083-1-RR, Clone:240791B7)(red), or 0.25 ug Isotype Control(blue) and PE-Conjugated AffiniPure Goat Anti-Rabbit IgG(H+L). Cells were incubated with FC Receptor Block prior to fixing and staining. Cells were not fixed.



Bi-layer interferometry (BLI) kinetic assays of 98083-1-RR against Human CLEC12A were performed. The affinity constant is 0.524 nM.