

For Research Use Only

# Anti-Human CLEC12A Rabbit Recombinant Antibody, PBS Only

Catalog Number: 98083-1-PBS



## Basic Information

Catalog Number:

98083-1-PBS

Size:

1mg, 2 mg/ml

Source:

Rabbit

Isotype:

IgG

GenBank Accession Number:

BC126291

GeneID (NCBI):

160364

UNIPROT ID:

Q5QGZ9

Full Name:

C-type lectin domain family 12, member A

Calculated MW:

31 kDa

Purification Method:

Protein A purification

CloneNo.:

240791B7

## Applications

Tested Applications:

FC

Species Specificity:

human

## Background Information

CLEC12A, also known as CD371, MICL, DCAL-2 or CLL-1, is a type II transmembrane glycoprotein and a member of the C-type lectin superfamily (PMID: 30401586). This protein, which contains a single C-type lectin-like domain and a cytoplasmic immunoreceptor tyrosine-based inhibitory motif (ITIM), is related to LOX-1 and Dectin-1 and is variably spliced and highly N-glycosylated (PMID: 14739280). Its ITIM sequence recruits the tyrosine phosphatases SHP-1 and SHP-2 to negatively regulate Syk signaling. In humans, CLEC12A is mainly expressed on myeloid cells, being found on monocytes, granulocytes, macrophages and DC subsets, and at lower levels on CD4<sup>+</sup> T cells (PMID: 32477350). The observed molecular weight of CLEC12A is between 40 and 75 kDa, which is much higher than the predicted molecular weight due to glycosylation (PMID: 14739280).

## Storage

Storage:

Store at -80°C.

Storage Buffer:

PBS Only

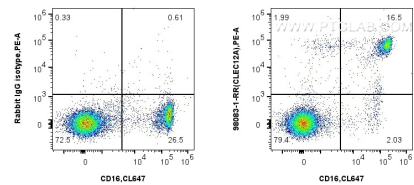
For technical support and original validation data for this product please contact:

T: 1 (888) 4PTGLAB (1-888-478-4522) (toll free in USA), or 1(312) 455-8498 (outside USA)

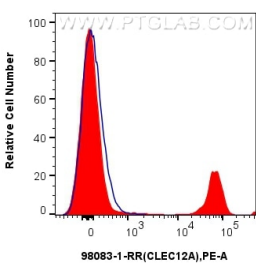
E: [proteintech@ptglab.com](mailto:proteintech@ptglab.com)  
W: [ptglab.com](http://ptglab.com)

This product is exclusively available under Proteintech Group brand and is not available to purchase from any other manufacturer.

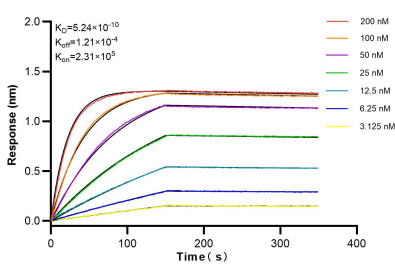
Selected Validation Data



1x10<sup>6</sup> human peripheral blood leukocytes were surface stained with 0.25 ug Anti-Human CLEC12A Rabbit Recombinant Antibody (98083-1-RR, Clone:240791B7), or Isotype Control and PE-Conjugated AffiniPure Goat Anti-Rabbit IgG(H+L). Cells were then stained with CoraLite® Plus 647 Anti-Human CD16. Cells were incubated with FC Receptor Block prior to fixing and staining. Cells were not fixed. This data was developed using the same antibody clone with 98083-1-PBS in a



1x10<sup>6</sup> human peripheral blood leukocytes were surface stained with 0.25 ug Anti-Human CLEC12A Rabbit Recombinant Antibody (98083-1-RR, Clone:240791B7)(red), or 0.25 ug Isotype Control(blue) and PE-Conjugated AffiniPure Goat Anti-Rabbit IgG(H+L). Cells were incubated with FC Receptor Block prior to fixing and staining. Cells were not fixed. This data was developed using the same antibody clone with 98083-1-PBS in a different storage buffer formulation.



Biolayer interferometry (BLI) kinetic assays of 98083-1-RR against Human CLEC12A were performed. The affinity constant is 0.524 nM.