

For Research Use Only

Anti-Human CSF2RA/CD116 Rabbit Recombinant Antibody

Catalog Number: 98066-1-RR



Basic Information

Catalog Number:

98066-1-RR

Size:

100ug, 1000 µg/ml

Source:

Rabbit

Isotype:

IgG

GenBank Accession Number:

BC002635

GeneID (NCBI):

1438

UNIPROT ID:

P15509

Full Name:

colony stimulating factor 2 receptor, alpha, low-affinity (granulocyte-macrophage)

Calculated MW:

46 kDa

Purification Method:

Protein A purification

CloneNo.:

241266B11

Applications

Tested Applications:

FC

Species Specificity:

human

Background Information

CD116, also named as CSF2RA CDw116 CSF2RAX CSF2RAY CSF2RX CSF2RY GM-CSF-R-alpha GMCSFR and GMR, is a low affinity receptor for granulocyte-macrophage colony-stimulating factor. CD116 transduces a signal that results in the proliferation, differentiation, and functional activation of hematopoietic cells.

Storage

Storage:

Store at 2 - 8°C. Stable for one year after shipment.

Storage Buffer:

PBS with 0.09% sodium azide, pH 7.3.

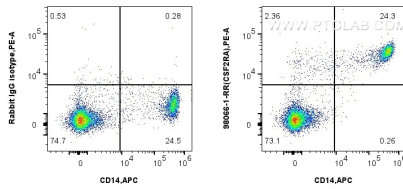
For technical support and original validation data for this product please contact:

T: 1 (888) 4PTGLAB (1-888-478-4522) (toll free in USA), or 1(312) 455-8498 (outside USA)

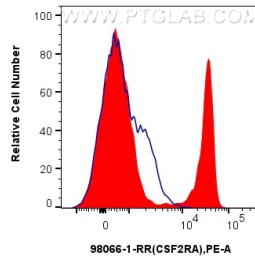
E: proteintech@ptglab.com
W: ptglab.com

This product is exclusively available under Proteintech Group brand and is not available to purchase from any other manufacturer.

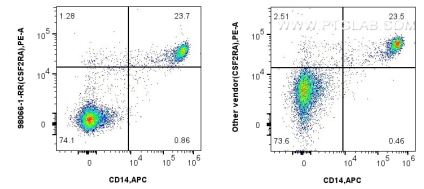
Selected Validation Data



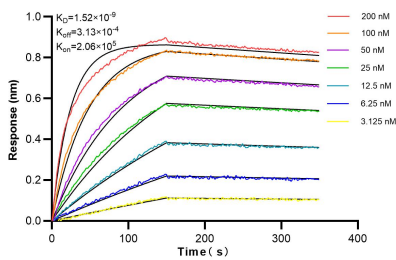
1x10⁶ human PBMCs were surface stained with 0.25 ug Anti-Human CSF2RA/CD116 Rabbit Recombinant Antibody (98066-1-RR, Clone:241266B11) and PE-Conjugated AffiniPure Goat Anti-Rabbit IgG (H+L), or 0.25 ug Isotype Control. Cells were then stained with APC Anti-Human CD14 (261C) (APC-65246, Clone: 261C). Cells were not fixed.



1x10⁶ human PBMCs were surface stained with 0.25 ug Anti-Human CSF2RA/CD116 Rabbit Recombinant Antibody (98066-1-RR, Clone:241266B11) and PE-Conjugated AffiniPure Goat Anti-Rabbit IgG (H+L) (red), or 0.25 ug Isotype Control (blue). Cells were not fixed.



1x10⁶ human PBMCs were surface stained with 0.25 ug Anti-Human CSF2RA/CD116 Rabbit Recombinant Antibody (98066-1-RR, Clone:241266B11) and PE-Conjugated AffiniPure Goat Anti-Rabbit IgG (H+L), and 0.25 ug APC Anti-Human CD14 (261C) (APC-65246, Clone: 261C), and 0.25 ug Isotype Control. Cells were not fixed.



Biolayer interferometry (BLI) kinetic assays of 98066-1-RR against Human CSF2RA/CD116 were performed. The affinity constant is 1.52 nM.