

For Research Use Only

# Anti-Human CSF2RA/CD116 Rabbit Recombinant Antibody, PBS Only

Catalog Number: 98066-1-PBS



## Basic Information

**Catalog Number:**

98066-1-PBS

**Size:**

1mg, 2mg/ml

**Source:**

Rabbit

**Isotype:**

IgG

**GenBank Accession Number:**

BC002635

**GeneID (NCBI):**

1438

**UNIPROT ID:**

P15509

**Full Name:**

colony stimulating factor 2 receptor, alpha, low-affinity (granulocyte-macrophage)

**Calculated MW:**

46 kDa

**Purification Method:**

Protein A purification

**CloneNo.:**

241266B11

## Applications

**Tested Applications:**

FC, Cytometric bead array, Sandwich ELISA, Indirect ELISA, Sample test

**Species Specificity:**

human

## Product Information

98066-1-PBS targets CSF2RA/CD116 as part of a matched antibody pair.

MP00953-1: 98066-1-PBS capture and 84023-1-PBS detection (validated in Cytometric bead array, Sandwich ELISA)

Unconjugated rabbit recombinant monoclonal antibody in PBS only (BSA and azide free) storage buffer at a concentration of 1 mg/mL, ready for conjugation. Created using Proteintech's proprietary in-house recombinant technology. Recombinant production enables unrivalled batch-to-batch consistency, easy scale-up, and future security of supply.

This conjugation ready format makes antibodies ideal for use in many applications including: ELISAs, multiplex assays requiring matched pairs, mass cytometry, and multiplex imaging applications. Antibody use should be optimized by the end user for each application and assay.

## Background Information

CD116, also named as CSF2RA CDw116 CSF2RAX CSF2RAY CSF2RX CSF2RY GM-CSF-R-alpha GMCSFR and GMR, is a low affinity receptor for granulocyte-macrophage colony-stimulating factor. CD116 transduces a signal that results in the proliferation, differentiation, and functional activation of hematopoietic cells.

## Storage

**Storage:**

Store at -80°C.

**Storage Buffer:**

PBS Only

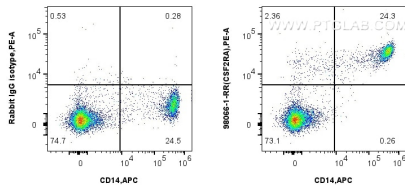
For technical support and original validation data for this product please contact:

T: 1 (888) 4PTGLAB (1-888-478-4522) (toll free in USA), or 1(312) 455-8498 (outside USA)

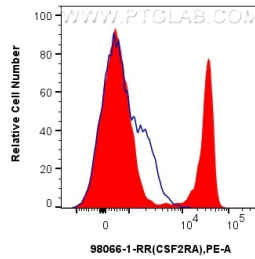
E: [proteintech@ptglab.com](mailto:proteintech@ptglab.com)  
W: [ptglab.com](http://ptglab.com)

**This product is exclusively available under Proteintech Group brand and is not available to purchase from any other manufacturer.**

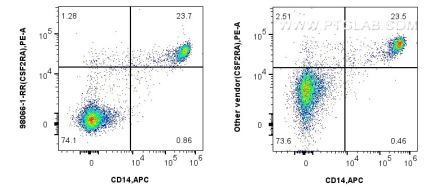
## Selected Validation Data



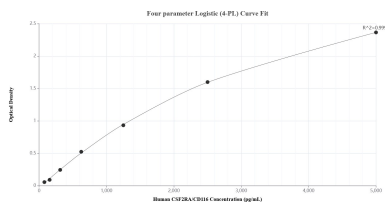
1x10<sup>6</sup> human PBMCs were surface stained with 0.25 ug Anti-Human CSF2RA/CD116 Rabbit Recombinant Antibody (98066-1-RR, Clone:241266B11) and PE-Conjugated AffiniPure Goat Anti-Rabbit IgG (H+L), or 0.25 ug Isotype Control. Cells were then stained with APC Anti-Human CD14 (261C) (APC-65246, Clone: 261C). Cells were not fixed. This data was developed using the same antibody clone with 98066-1-PBS in a different storage buffer formulation.



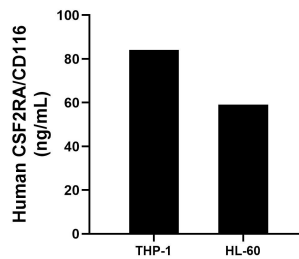
1x10<sup>6</sup> human PBMCs were surface stained with 0.25 ug Anti-Human CSF2RA/CD116 Rabbit Recombinant Antibody (98066-1-RR, Clone:241266B11) and PE-Conjugated AffiniPure Goat Anti-Rabbit IgG (H+L), or 0.25 ug Isotype Control (blue). Cells were not fixed. This data was developed using the same antibody clone with 98066-1-PBS in a different storage buffer formulation.



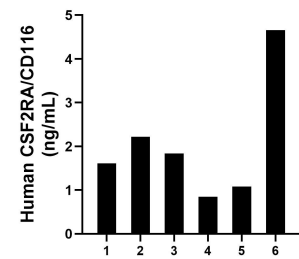
1x10<sup>6</sup> human PBMCs were surface stained with 0.25 ug Anti-Human CSF2RA/CD116 Rabbit Recombinant Antibody (98066-1-RR, Clone:241266B11) and PE-Conjugated AffiniPure Goat Anti-Rabbit IgG (H+L), and 0.25 ug APC Anti-Human CD14 (261C) (APC-65246, Clone: 261C), and 0.25 ug Isotype Control. Cells were not fixed. This data was developed using the same antibody clone with 98066-1-PBS in a different storage buffer formulation.



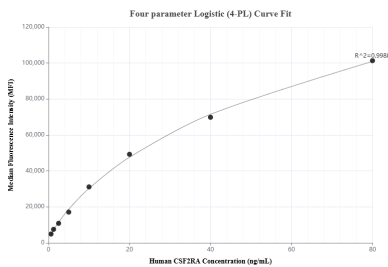
Sandwich ELISA standard curve of MP00953-1, Human CSF2RA/CD116 Recombinant Matched Antibody Pair - PBS only. 98066-1-PBS was coated to a plate as the capture antibody and incubated with serial dilutions of standard RP02335. 84023-1-PBS was HRP conjugated as the detection antibody. Range: 78.1-5000 pg/mL



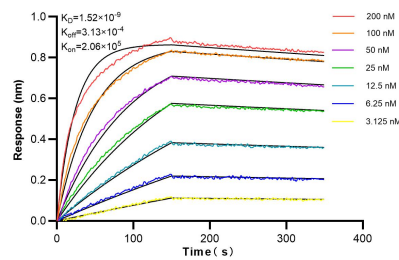
The mean CSF2RA/CD116 concentration was determined to be 84.1 ng/mL in THP-1 cell extract based on a 4.0 mg/mL extract load and 59.0 ng/mL in HL-60 cell extract based on a 5.6 mg/mL extract load.



Serum of six individual healthy human donors was measured. The CSF2RA/CD116 concentration of detected samples was determined to be 2.0 ng/mL with a range of 0.9-4.7 ng/mL



Cytometric bead array standard curve of MP00953-1, CSF2RA/CD116 Recombinant Matched Antibody Pair, PBS Only. Capture antibody: 98066-1-PBS. Detection antibody: 84023-1-PBS. Standard: RP02335. Range: 0.625-80 ng/mL



Bi-layer interferometry (BLI) kinetic assays of 98066-1-RR against Human CSF2RA/CD116 were performed. The affinity constant is 1.52 nM.