

For Research Use Only

# Anti-Human PD-L1/CD274 Rabbit Recombinant Antibody, PBS Only

Catalog Number: 98062-1-PBS



## Basic Information

Catalog Number:

98062-1-PBS

Size:

1mg, 2mg/ml

Source:

Rabbit

Isotype:

IgG

GenBank Accession Number:

BC074984

GeneID (NCBI):

29126

UNIPROT ID:

Q9NZQ7

Full Name:

CD274 molecule

Calculated MW:

290 aa, 33 kDa

Purification Method:

Protein A purification

CloneNo.:

240721H8

## Applications

Tested Applications:

FC

Species Specificity:

human

## Background Information

Programmed cell death ligand 1 (PD-L1, CD274, or B7-H1), is the first member of B7 family to be discovered. B7 family molecules are type I transmembrane proteins belonging to the immunoglobulin superfamily. In concert with their CD28 family receptors, the B7s are key regulators of the adaptive immune response. PD-L1 is suggested as a negative regulator of T and B cell, and plays important role in mediating tolerance of lymphocytes to self-antigens. It is also involved in the costimulatory signal, essential for T-cell proliferation and production of IL10 and IFNG, in an IL2-dependent and a PD-1-independent manner.

## Storage

Storage:

Store at -80°C.

Storage Buffer:

PBS Only

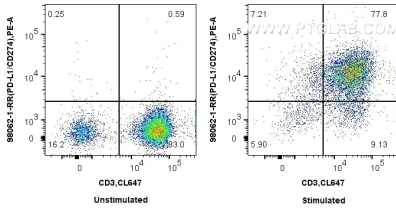
For technical support and original validation data for this product please contact:

T: 1 (888) 4PTGLAB (1-888-478-4522) (toll free in USA), or 1(312) 455-8498 (outside USA)

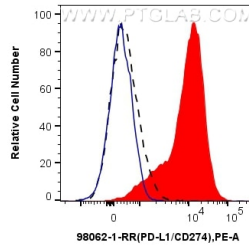
E: [proteintech@ptglab.com](mailto:proteintech@ptglab.com)  
W: [ptglab.com](http://ptglab.com)

This product is exclusively available under Proteintech Group brand and is not available to purchase from any other manufacturer.

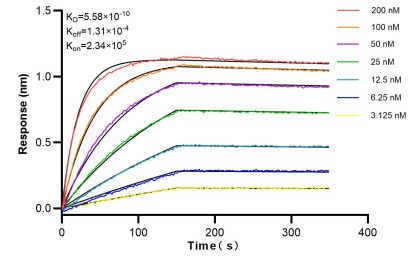
## Selected Validation Data



1x10<sup>6</sup> unstimulated or PHA stimulated human PBMCs were stained with 0.25 ug Anti-Human PD-L1/CD274 Rabbit Recombinant Antibody (98062-1-RR, Clone:240721H8) and PE-Conjugated AffiniPure Goat Anti-Rabbit IgG(H+L). Cells were then stained with CoraLite® Plus 647 Anti-Human CD3 (OKT3) Mouse IgG2a Recombinant Antibody (CL647-65569, Clone: OKT3). Cells were not fixed. This data was developed using the same antibody clone with 98062-1-PBS in a



1x10<sup>6</sup> unstimulated (black) or PHA stimulated human PBMCs (red) were stained with 0.25 ug Anti-Human PD-L1/CD274 Rabbit Recombinant Antibody (98062-1-RR, Clone:240721H8) and PE-Conjugated AffiniPure Goat Anti-Rabbit IgG(H+L). 1x10<sup>6</sup> PHA treated human PBMCs were stained with Isotype Control (blue). Cells were not fixed. This data was developed using the same antibody clone with 98062-1-PBS in a different storage buffer formulation.



Bi-layer interferometry (BLI) kinetic assays of 98057-1-RR against Human PD-L1/CD274 were performed. The affinity constant is 0.558 nM.