

For Research Use Only

Anti-Human IL-2 Rabbit Recombinant Antibody

Catalog Number: 98053-1-RR



Basic Information

Catalog Number: 98053-1-RR	GenBank Accession Number: BC070338	Purification Method: Protein A purification
Size: 100ug , 1000 µg/ml	GeneID (NCBI): 3558	CloneNo.: 240416E3
Source: Rabbit	UNIPROT ID: P60568	
Isotype: IgG	Full Name: interleukin 2	
	Calculated MW: 153 aa, 18 kDa	

Applications

Tested Applications:
FC (Intra)

Species Specificity:
human

Background Information

Interleukin-2 (IL-2) is a four-helix bundle, type I cytokine that functions as a growth factor for a wide range of leukocytes. In the immune system, IL-2 is essential for immune homeostasis, normal T regulatory cell function, and self-tolerance. It regulates immune cell homeostasis and has been used to treat a range of disorders including cancer and autoimmune disease. IL-2 signals through heterodimerization of the IL-2R β and IL-2R γ receptor subunits (PMID: 25992858, 24907378, 15034008, 17981641).

Storage

Storage:
Store at 2-8°C. Stable for one year after shipment.

Storage Buffer:
PBS with 0.09% sodium azide, pH 7.3.

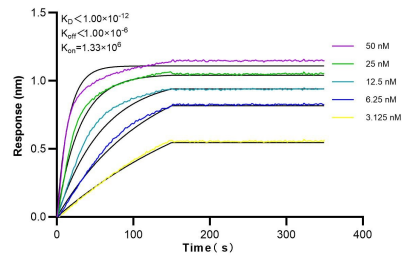
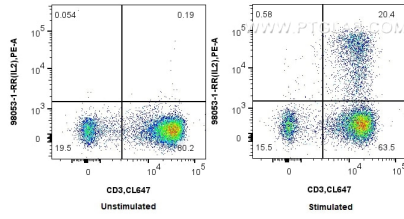
For technical support and original validation data for this product please contact:

T: 1 (888) 4PTGLAB (1-888-478-4522) (toll free in USA), or 1(312) 455-8498 (outside USA)

E: proteintech@ptglab.com
W: ptglab.com

This product is exclusively available under Proteintech Group brand and is not available to purchase from any other manufacturer.

Selected Validation Data



1×10^6 untreated or PMA, Ionomycin and Brefeldin A treated human PBMCs were intracellularly stained with 0.25 μ g Anti-Human IL2 Rabbit Recombinant Antibody (98053-1-RR, Clone: 240416E3) and PE-conjugated Goat Anti-Rabbit IgG. Cells were then stained with CoraLite® Plus 647 Anti-Human CD3. Cells were fixed with 4% PFA and permeabilized with Flow Cytometry Perm Buffer (PF00011-C).

Biolayer interferometry (BLI) kinetic assays of 98053-1-RR against Human IL-2 were performed. The affinity constant is below 1 pM.