

For Research Use Only

Anti-Human CD138/Syndecan-1 Rabbit Recombinant Antibody, PBS Only

Catalog Number: 98051-1-PBS



Basic Information

Catalog Number:

98051-1-PBS

Size:

1mg, 2 mg/ml

Source:

Rabbit

Isotype:

IgG

GenBank Accession Number:

BC008765

GeneID (NCBI):

6382

UNIPROT ID:

P18827

Full Name:

syndecan 1

Calculated MW:

32.5 kDa

Purification Method:

Protein A purification

CloneNo.:

240422C4

Applications

Tested Applications:

IHC, FC

Species Specificity:

human

Background Information

CD138, also named as Syndecan-1 (SDC1), is an integral membrane protein. It participates in cell proliferation, cell migration and cell-matrix interactions via its receptor for extracellular matrix proteins. It is a heparan sulfate proteoglycan expressed on the surface of, and actively shed by, myeloma cells. Altered syndecan-1 expression has been detected in several different tumor types. CD138 was regarded as a useful marker for labeling normal and neoplastic plasma cells and plasmacytoid lymphomas.

Storage

Storage:

Store at -80°C.

Storage Buffer:

PBS Only

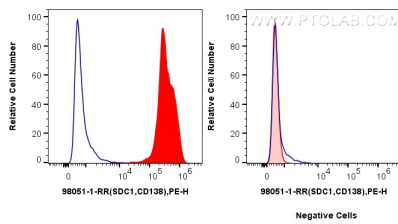
For technical support and original validation data for this product please contact:

T: 1 (888) 4PTGLAB (1-888-478-4522) (toll free in USA), or 1(312) 455-8498 (outside USA)

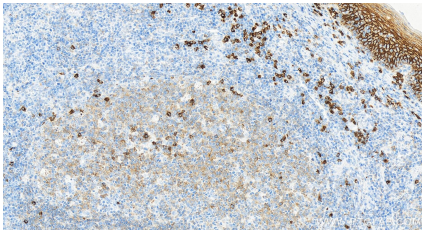
E: proteintech@ptglab.com
W: ptglab.com

This product is exclusively available under Proteintech Group brand and is not available to purchase from any other manufacturer.

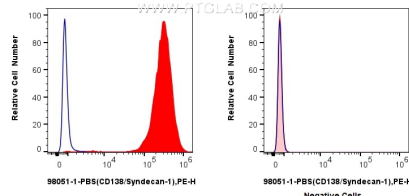
Selected Validation Data



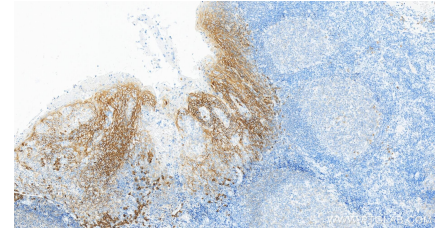
1x10⁶ U266 cells (left) or Jurkat cells (right) were surface stained with 0.25 ug Anti-Human CD138/Syndecan-1 Rabbit Recombinant Antibody (98051-1-RR, Clone: 240422C4) and PE-Conjugated Goat Anti-Rabbit IgG(H+L) (red), or Rabbit IgG Isotype Control Recombinant Antibody (98136-1-RR, Clone: 240953C9) and PE-Conjugated Goat Anti-Rabbit IgG(H+L) (blue). Cells were not fixed. This data was developed using the same antibody clone with 98051-1-PBS in a



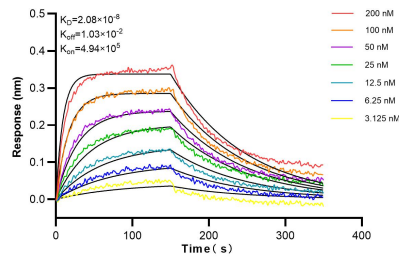
Immunohistochemical analysis of paraffin-embedded human tonsillitis tissue slide using 98051-1-RR (CD138/Syndecan-1) antibody at dilution of 1:1000 (under 20x lens). Heat mediated antigen retrieval with Tris-EDTA buffer (pH 9.0). This data was developed using the same antibody clone with 98051-1-PBS in a different storage buffer formulation.



1x10⁶ U266 cells (left) or Jurkat cells (right) were surface stained with 0.25 ug Anti-Human CD138/Syndecan-1 Rabbit Recombinant Antibody, PBS Only (98051-1-PBS, Clone: 240422C4) (red) or 0.25 ug Rabbit IgG Isotype Control Recombinant Antibody (98136-1-RR, Clone: 240953C9) (blue), and PE-Conjugated Goat Anti-Rabbit IgG(H+L). Cells were not fixed.



Immunohistochemical analysis of paraffin-embedded human tonsillitis tissue slide using 98051-1-RR (CD138/Syndecan-1) antibody at dilution of 1:1000 (under 10x lens). Heat mediated antigen retrieval with Tris-EDTA buffer (pH 9.0). This data was developed using the same antibody clone with 98051-1-PBS in a different storage buffer formulation.



Biolayer interferometry (BLI) kinetic assays of 98051-1-RR against Human CD138/Syndecan-1 were performed. The affinity constant is 20.8 nM.