

For Research Use Only

Anti-Human MCP-1/CCL2 Rabbit Recombinant Antibody

Catalog Number: 98044-1-RR



Basic Information

Catalog Number: 98044-1-RR	GenBank Accession Number: BC009716	Purification Method: Protein A purification
Size: 100ug, 1 mg/ml	GeneID (NCBI): 6347	CloneNo.: 230270A7
Source: Rabbit	UNIPROT ID: P13500	
Isotype: IgG	Full Name: chemokine (C-C motif) ligand 2	
	Calculated MW: 99 aa, 11 kDa	

Applications

Tested Applications:
FC (Intra)

Species Specificity:
human

Background Information

Monocyte chemoattractant protein 1 (MCP-1; also known as CCL2), is chemotactic for monocyte/macrophage, B-cell, and T-lymphocyte, and belongs to the CC subfamily of chemokines. Chemokines are a superfamily of secreted proteins involved in immunoregulatory and inflammatory processes. The human ortholog has been implicated in the pathogenesis of diseases characterized by monocytic infiltrates, such as psoriasis, rheumatoid arthritis, and atherosclerosis.

Storage

Storage:
Store at 2-8°C. Stable for one year after shipment.

Storage Buffer:
PBS with 0.09% sodium azide.

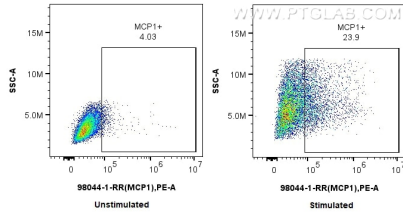
For technical support and original validation data for this product please contact:

T: 1 (888) 4PTGLAB (1-888-478-4522) (toll free in USA), or 1(312) 455-8498 (outside USA)

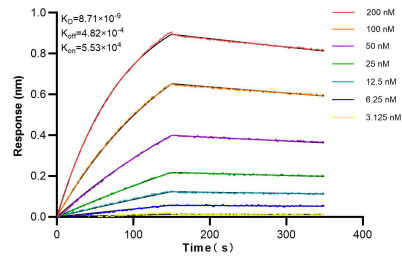
E: proteintech@ptglab.com
W: ptglab.com

This product is exclusively available under Proteintech Group brand and is not available to purchase from any other manufacturer.

Selected Validation Data



1×10^6 untreated or PMA, LPS and Brefeldin A treated THP-1 cells were intracellularly stained with 0.5 μ g Anti-Human MCP-1 Rabbit Recombinant Antibody (98044-1-RR, Clone: 230270A7) and PE-conjugated Goat Anti-Rabbit IgG. Cells were fixed with 4% PFA and permeabilized with Flow Cytometry Perm Buffer (PF00011-C).



Biolayer interferometry (BLI) kinetic assays of 98044-1-RR against Human MCP-1/CCL2 were performed. The affinity constant is 8.71 nM.