

For Research Use Only

# Anti-Human CD141/Thrombomodulin Rabbit Recombinant Antibody, PBS Only

Catalog Number: 98037-2-PBS



## Basic Information

Catalog Number:

98037-2-PBS

Size:

1mg, 2 mg/ml

Source:

Rabbit

Isotype:

IgG

GenBank Accession Number:

NM\_000361.3

GeneID (NCBI):

7056

UNIPROT ID:

P07204

Full Name:

thrombomodulin

Calculated MW:

60 kDa

Purification Method:

Protein A purification

CloneNo.:

240365H3

## Applications

Tested Applications:

FC

Species Specificity:

human

## Background Information

Thrombomodulin, also known as CD141, is an endothelial cell surface glycoprotein that forms a 1:1 complex with the coagulation factor thrombin and plays an important role as a natural anticoagulant. Thrombomodulin serves to convert thrombin from a procoagulant protein into the activator for protein C. Once converted to activated protein C (APC), this protein serves as a major anticoagulant in blood (PMID: 2827310). Thrombomodulin is also located in other cells (keratinocytes, osteoblasts, macrophages,...) where it might be involved in cell differentiation or in inflammation (PMID: 9814688). In humans, thrombomodulin is encoded by the THBD gene. Mutations in this gene are a cause of thromboembolic disease, also known as inherited thrombophilia. Thrombomodulin is glycosylated and has an apparent molecular weight of 75 to 110 kDa (PMID: 1650405; 2827310).

## Storage

Storage:

Store at -80°C.

Storage Buffer:

PBS Only

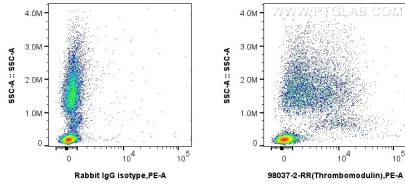
For technical support and original validation data for this product please contact:

T: 1 (888) 4PTGLAB (1-888-478-4522) (toll free in USA), or 1(312) 455-8498 (outside USA)

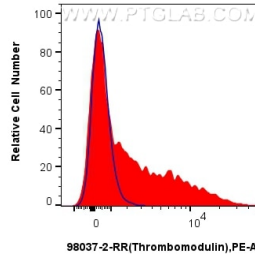
E: [proteintech@ptglab.com](mailto:proteintech@ptglab.com)  
W: [ptglab.com](http://ptglab.com)

This product is exclusively available under Proteintech Group brand and is not available to purchase from any other manufacturer.

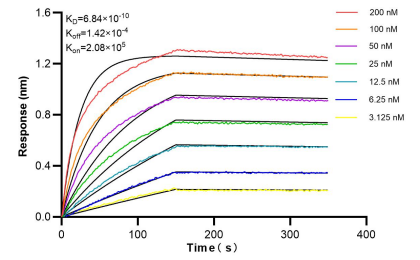
## Selected Validation Data



1x10<sup>6</sup> human peripheral blood leukocytes were surface stained with 0.25 ug Anti-Human Thrombomodulin Rabbit Recombinant Antibody (98037-2-RR, Clone: 240365H3) or 0.25 ug Control Antibody, and PE-Conjugated Goat Anti-Rabbit IgG(H+L). Cells were incubated with FC Receptor Block prior to staining. Cells were not fixed. This data was developed using the same antibody clone with 98037-2-PBS in a different storage buffer formulation.



1x10<sup>6</sup> human peripheral blood leukocytes were surface stained with 0.25 ug Anti-Human Thrombomodulin Rabbit Recombinant Antibody (98037-2-RR, Clone: 240365H3) (red) or 0.25 ug Control Antibody (blue), and PE-Conjugated Goat Anti-Rabbit IgG(H+L). Cells were incubated with FC Receptor Block prior to staining. Cells were not fixed. This data was developed using the same antibody clone with 98037-2-PBS in a different storage buffer formulation.



Bi-layer interferometry (BLI) kinetic assays of 98037-2-RR against Human CD141/Thrombomodulin were performed. The affinity constant is 0.684 nM.