

For Research Use Only

Anti-Mouse IL-15 Rabbit Recombinant Antibody

Catalog Number: 98036-1-RR



Basic Information

Catalog Number: 98036-1-RR	GenBank Accession Number: NM_001254747	Purification Method: Protein A purification
Size: 100ug, 1 mg/ml	GeneID (NCBI): 16168	CloneNo.: 230285B3
Source: Rabbit	UNIPROT ID: P48346	
Isotype: IgG	Full Name: interleukin 15	
	Calculated MW: 19 kDa	

Applications

Tested Applications:
FC (Intra)

Species Specificity:
Mouse

Background Information

IL-15 is a 4- α -helix bundle cytokine playing a pivotal role in stimulation of both innate and adaptive immune cells. It is produced primarily by keratinocytes, skeletal muscle cells, monocytes, and CD4+ T cells. It is a member of the common gamma chain family. The members of the common gamma chain family include the IL-2, IL-4, IL-7, IL-9, and IL-21 and require binding to the common gamma chain receptor for activation. It can be used in growth and maintenance of T and NK cells. It is also shown to be used in proliferation and functional effect of T cells for adoptive cell therapy. It is a glycosylated protein and HumanKine IL-15 appear as 12.5-25 kDa bands (PMID: 24587813, 26627006, 27849617, 31250350)

Storage

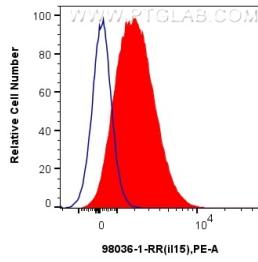
Storage:
Store at 2-8°C. Stable for one year after shipment.

Storage Buffer:
PBS with 0.09% sodium azide.

For technical support and original validation data for this product please contact:
T: 1 (888) 4PTGLAB (1-888-478-4522) (toll free in USA), or 1(312) 455-8498 (outside USA) E: proteintech@ptglab.com
W: ptglab.com

This product is exclusively available under Proteintech Group brand and is not available to purchase from any other manufacturer.

Selected Validation Data



1x10⁶ Mouse PBMCs were intracellularly stained with 0.25 ug Anti-Mouse IL-15 Rabbit Recombinant Antibody (98036-1-RR, Clone: 230285B3) (red) or Isotype Control (blue), and PE-Conjugated AffiniPure Goat Anti-Rabbit IgG(H+L). Cells were fixed with 4% PFA and permeabilized with Intracellular Staining Permeabilization Wash Buffer.