

For Research Use Only

# Anti-Human NCAM1/CD56 Rabbit Recombinant Antibody, PBS Only

Catalog Number: 98033-1-PBS



## Basic Information

<b>Catalog Number:</b> 98033-1-PBS	<b>GenBank Accession Number:</b> BC047244	<b>Purification Method:</b> Protein A purification
<b>Size:</b> 1mg, 2 mg/ml	<b>GeneID (NCBI):</b> 4684	<b>CloneNo.:</b> 240078A7
<b>Source:</b> Rabbit	<b>ENSEMBL Gene ID:</b> ENSG00000149294	
<b>Isotype:</b> IgG	<b>UNIPROT ID:</b> P13591	
	<b>Full Name:</b> neural cell adhesion molecule 1	
	<b>Calculated MW:</b> 95 kDa	

## Applications

**Tested Applications:**  
FC

**Species Specificity:**  
human

## Background Information

Neural cell adhesion molecule 1 (NCAM1, also known as CD56) is a cell adhesion glycoprotein of the immunoglobulin (Ig) superfamily. It is a multifunction protein involved in synaptic plasticity, neurodevelopment, and neurogenesis. NCAM1 is expressed on human neurons, glial cells, skeletal muscle cells, NK cells and a subset of T cells, and the expression is observed in a wide variety of human tumors, including myeloma, myeloid leukemia, neuroendocrine tumors, Wilms' tumor, neuroblastoma, and NK/T cell lymphomas.

## Storage

**Storage:**  
Store at -80°C.

**Storage Buffer:**  
PBS Only

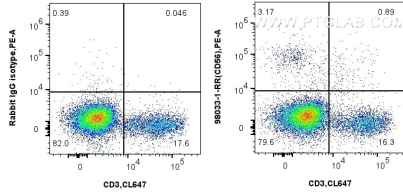
For technical support and original validation data for this product please contact:

T: 1 (888) 4PTGLAB (1-888-478-4522) (toll free in USA), or 1(312) 455-8498 (outside USA)

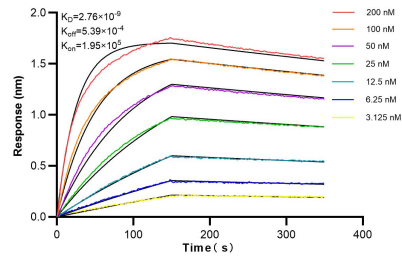
E: [proteintech@ptglab.com](mailto:proteintech@ptglab.com)  
W: [ptglab.com](http://ptglab.com)

This product is exclusively available under Proteintech Group brand and is not available to purchase from any other manufacturer.

## Selected Validation Data



1x10<sup>6</sup> human peripheral blood leukocytes were surface stained with 0.25 ug Anti-Human CD56 Rabbit Recombinant Antibody (98033-1-RR, Clone: 240078A7) or 0.25 ug Isotype Control, and PE-Conjugated AffiniPure Goat Anti-Rabbit IgG(H+L). Cells were then stained with CoraLite® Plus 647 Anti-Human CD3. Cells were incubated with FC Receptor Block prior to staining. Cells were not fixed. This data was developed using the same antibody clone with 98033-1-PBS in a different storage



Biolayer interferometry (BLI) kinetic assays of 98033-1-RR against Human NCAM1 were performed. The affinity constant is 2.76 nM.