

For Research Use Only

Anti-Human CD28 Rabbit Recombinant Antibody



Catalog Number: 98032-1-RR

Basic Information

Catalog Number: 98032-1-RR	GenBank Accession Number: BC093698	Purification Method: Protein A purification
Size: 100ug, 1 mg/ml	GeneID (NCBI): 940	CloneNo.: 240354D2
Source: Rabbit	ENSEMBL Gene ID: ENSG00000178562	
Isotype: IgG	UNIPROT ID: P10747	
	Full Name: CD28 molecule	
	Calculated MW: 220 aa, 25 kDa	

Applications

Tested Applications:
FC

Species Specificity:
Human

Background Information

CD28 (T-cell-specific surface glycoprotein CD28), also known as T44 and Tp44, is a 44 kD disulfide-linked homodimeric type I glycoprotein (PMID: 2162180). It is a member of the immunoglobulin superfamily and is expressed on most T lineage cells, NK cell subsets, and plasma cells (PMID: 2162180, 8386518). CD28 may affect in vivo immune responses by functioning both as a cell adhesion molecule linking B and T lymphocytes and as the surface component of a novel signal transduction pathway (PMID: 2162180, 3021470). CD28 binds both CD80 and CD86 with a highly conserved motif MYPPY in the CDR3-like loop (PMID: 15696168, 7964482). CD28 is considered a major co-stimulatory molecule, inducing T lymphocyte activation and IL-2 synthesis, and preventing cell death (PMID: 1348520).

Storage

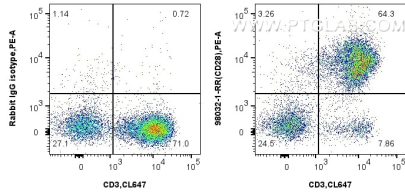
Storage:
Store at 2-8°C. Stable for one year after shipment.

Storage Buffer:
PBS with 0.09% sodium azide.

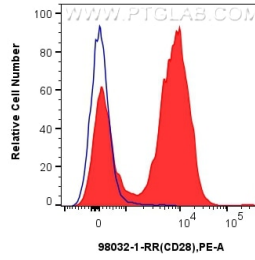
For technical support and original validation data for this product please contact:
T: 1 (888) 4PTGLAB (1-888-478-4522) (toll free in USA), or 1(312) 455-8498 (outside USA) E: proteintech@ptglab.com
W: ptglab.com

This product is exclusively available under Proteintech Group brand and is not available to purchase from any other manufacturer.

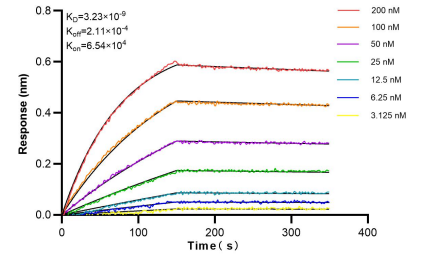
Selected Validation Data



1x10⁶ human PBMCs were surface stained with 0.25 ug Anti-Human CD28 Rabbit Recombinant Antibody (98032-1-RR, Clone: 240354D2) or Isotype Control, and PE-Conjugated AffiniPure Goat Anti-Rabbit IgG(H+L). Cells were then stained with CoraLite® Plus 647 Anti-Human CD3. Cells were not fixed. Lymphocytes were gated.



1x10⁶ human PBMCs were surface stained with 0.25 ug Anti-Human CD28 Rabbit Recombinant Antibody (98032-1-RR, Clone: 240354D2) (red) or Isotype Control (blue), and PE-Conjugated AffiniPure Goat Anti-Rabbit IgG(H+L). Cells were not fixed. Lymphocytes were gated.



Bi-layer interferometry (BLI) kinetic assays of 98032-1-RR against Human CD28 were performed. The affinity constant is 3.23 nM.