

For Research Use Only

# Anti-Mouse CD126/IL-6R alpha Rabbit Recombinant Antibody

Catalog Number: 98024-1-RR



## Basic Information

**Catalog Number:**

98024-1-RR

**Size:**

100ug, 1 mg/ml

**Source:**

Rabbit

**Isotype:**

IgG

**GenBank Accession Number:**

NM\_010559.3

**GeneID (NCBI):**

16194

**UNIPROT ID:**

P22272

**Full Name:**

interleukin 6 receptor, alpha

**Calculated MW:**

50KD

**Purification Method:**

Protein A purification

**CloneNo.:**

230371A7

## Applications

**Tested Applications:**

FC

**Species Specificity:**

mouse

## Background Information

Interleukin-6 (IL-6) is a pleiotropic cytokine produced by a variety of cells during infection, trauma, and immunological challenge (PMID: 8274730). IL-6 acts via a receptor complex consisting of two distinct membrane-bound glycoproteins, an 80-kDa IL-6-binding subunit (IL-6R alpha, CD126, gp80) and a 130-kDa signal-transducing element (gp130, CD130). After binding of IL-6 to membrane-bound IL-6R alpha, the complex of IL-6 and IL-6R alpha associates with gp130, thus activating the receptor (PMID: 9716487). Expression of gp130 is found in almost all organs while expression of IL-6R alpha is predominantly confined to hepatocytes and leukocyte subpopulations (monocytes, neutrophils, T cells, and B cells) (PMID: 11149892).

## Storage

**Storage:**

Store at 2-8°C. Stable for one year after shipment.

**Storage Buffer:**

PBS with 0.09% sodium azide.

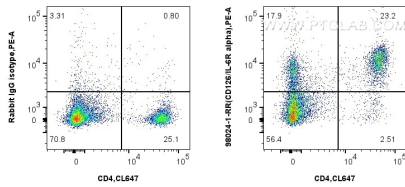
For technical support and original validation data for this product please contact:

T: 1 (888) 4PTGLAB (1-888-478-4522) (toll free in USA), or 1(312) 455-8498 (outside USA)

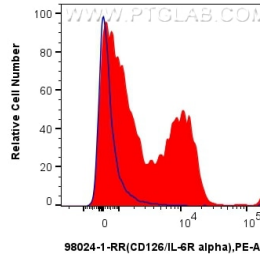
E: [proteintech@ptglab.com](mailto:proteintech@ptglab.com)  
W: [ptglab.com](http://ptglab.com)

**This product is exclusively available under Proteintech Group brand and is not available to purchase from any other manufacturer.**

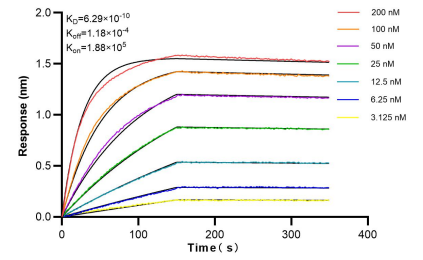
## Selected Validation Data



1x10<sup>6</sup> mouse splenocytes were surface stained with 0.25 ug Anti-Mouse CD126/IL-6R alpha Rabbit Recombinant Antibody (98024-1-RR, Clone: 230371A7) or Rabbit IgG Isotype Control Recombinant Antibody (98136-1-RR, Clone: 240953C9) and PE-Conjugated Goat Anti-Rabbit IgG(H+L). Cells were co-stained with CoraLite® Plus 647 Anti-Mouse CD4 (GK1.5) (CL647-65104, Clone: GK1.5). Cells were not fixed.



1x10<sup>6</sup> mouse splenocytes were surface stained with 0.25 ug Anti-Mouse CD126/IL-6R alpha Rabbit Recombinant Antibody (98024-1-RR, Clone:230371A7) (red) or Rabbit IgG Isotype Control Recombinant Antibody (98136-1-RR, Clone:240953C9) (blue) and PE-Conjugated Goat Anti-Rabbit IgG(H+L). Cells were not fixed.



Bi-layer interferometry (BLI) kinetic assays of 98024-1-RR against Mouse IL-6R alpha were performed. The affinity constant is 0.629 nM.