

For Research Use Only

# Anti-Mouse CD14 Rabbit Recombinant Antibody



Catalog Number: 98020-1-RR

## Basic Information

Catalog Number:

98020-1-RR

Size:

100ug, 1 mg/ml

Source:

Rabbit

Isotype:

IgG

GenBank Accession Number:

NM\_009841.4

GeneID (NCBI):

12475

UNIPROT ID:

P10810

Full Name:

CD14 antigen

Calculated MW:

39 kDa

Purification Method:

Protein A purification

CloneNo.:

240225C2

Recommended Dilutions:

IF/ICC 1:125-1:500

## Applications

Tested Applications:

FC, IF/ICC

Species Specificity:

mouse

Positive Controls:

IF/ICC : RAW 264.7 cells,

## Background Information

CD14 is a 50-55 kDa glycosylphosphatidylinositol-anchored glycoprotein preferentially expressed on monocytes and macrophages, and at lower levels on granulocytes (PMID: 3385210; 2462937; 7685797). CD14 can also exist as a soluble protein. CD14 acts as a co-receptor for bacterial liposaccharides (LPS) (PMID: 1698311). It plays a major role in the inflammatory response of monocytes to LPS.

## Storage

Storage:

Store at 2-8°C. Avoid exposure to light. Stable for one year after shipment.

Storage Buffer:

PBS with 0.09% sodium azide.

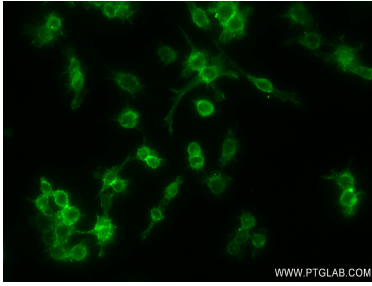
For technical support and original validation data for this product please contact:

T: 1 (888) 4PTGLAB (1-888-478-4522) (toll free  
in USA), or 1(312) 455-8498 (outside USA)

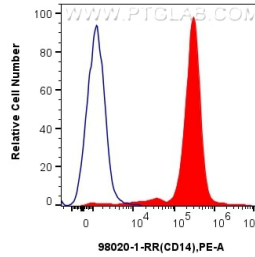
E: [proteintech@ptglab.com](mailto:proteintech@ptglab.com)  
W: [ptglab.com](http://ptglab.com)

This product is exclusively available under Proteintech Group brand and is not available to purchase from any other manufacturer.

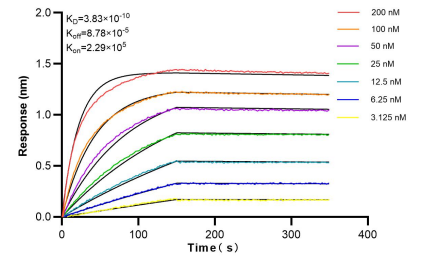
## Selected Validation Data



Immunofluorescent analysis of (4% PFA) fixed RAW 264.7 cells using CD14 antibody (98020-1-RR, Clone: 240225C2) at dilution of 1:250 and CoraLite®488-Conjugated AffiniPure Goat Anti-Rabbit IgG(H+L) (SA00013-2).



$1 \times 10^6$  mouse peritoneal macrophages were surface stained with 0.25  $\mu$ g Anti-Mouse CD14 Rabbit Recombinant Antibody (98020-1-RR, Clone: 240225C2) and PE-conjugated Goat Anti-Rabbit IgG (red), or 0.25  $\mu$ g Isotype Control and PE-conjugated Goat Anti-Rabbit IgG (blue). Cells were not fixed.



Bi-layer interferometry (BLI) kinetic assays of 98020-1-RR against Mouse CD14 were performed. The affinity constant is 0.383 nM.