

For Research Use Only

# Anti-Human TLR3/CD283 Rabbit Recombinant Antibody

Catalog Number: 98016-2-RR



## Basic Information

<b>Catalog Number:</b> 98016-2-RR	<b>GenBank Accession Number:</b> BC094737	<b>Purification Method:</b> Protein A purification
<b>Size:</b> 100ug, 1 mg/ml	<b>GeneID (NCBI):</b> 7098	<b>CloneNo.:</b> 230445G9
<b>Source:</b> Rabbit	<b>UNIPROT ID:</b> O15455	
<b>Isotype:</b> IgG	<b>Full Name:</b> toll-like receptor 3	
<b>Immunogen Catalog Number:</b> AG34044	<b>Calculated MW:</b> 904 aa, 104 kDa	

## Applications

**Tested Applications:**  
FC (Intra)

**Species Specificity:**  
human

## Background Information

TLR3 belongs to the Toll-like receptor family which is important in the innate immune response to pathogens. TLRs are highly conserved from Drosophila to humans and share structural and functional similarities. TLR3 is a nucleotide-sensing TLR that is activated by double-stranded RNA. Upon recognition of dsRNA, TLR3 transmits signals via the adaptor protein TICAM-1/TRIF, leading to the induction of type I IFN, cytokine/chemokine production, and dendritic cell (DC) maturation (PMID: 18262679).

## Storage

**Storage:**  
Store at 2-8°C. Stable for one year after shipment.

**Storage Buffer:**  
PBS with 0.09% sodium azide.

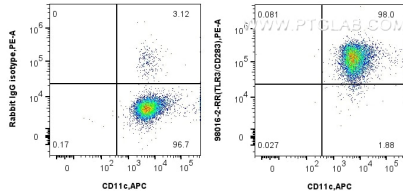
For technical support and original validation data for this product please contact:

T: 1 (888) 4PTGLAB (1-888-478-4522) (toll free in USA), or 1(312) 455-8498 (outside USA)

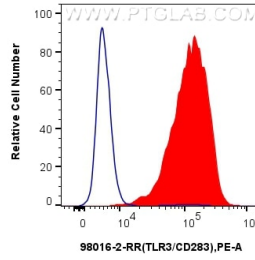
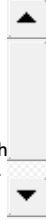
E: [proteintech@ptglab.com](mailto:proteintech@ptglab.com)  
W: [ptglab.com](http://ptglab.com)

This product is exclusively available under Proteintech Group brand and is not available to purchase from any other manufacturer.

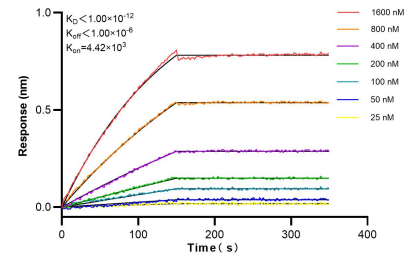
## Selected Validation Data



1x10<sup>6</sup> human monocyte-derived immature dendritic cells were intracellularly stained with 0.25 ug Anti-Human TLR3/CD283 Rabbit Recombinant Antibody (98016-2-RR, Clone: 230445G9) or 0.25 ug Isotype Control and PE-Conjugated AffiniPure Goat Anti-Rabbit IgG(H+L). Cells were then stained with APC Anti-Human CD11c. Cells were incubated with FC Receptor Block prior to fixing and staining. Cells were fixed with 4% PFA and permeabilized with Flow Cytometry Perm



1x10<sup>6</sup> human monocyte-derived immature dendritic cells were intracellularly stained with 0.25 ug Anti-Human TLR3/CD283 Rabbit Recombinant Antibody (98016-2-RR, Clone: 230445G9) (red) or 0.25 ug Isotype Control (blue) and PE-Conjugated AffiniPure Goat Anti-Rabbit IgG(H+L). Cells were then stained with APC Anti-Human CD11c. Cells were incubated with FC Receptor Block prior to fixing and staining. Cells were fixed with 4% PFA and permeabilized with Flow Cytometry



Bi-layer interferometry (BLI) kinetic assays of 98016-2-RR against Human TLR3/CD283 were performed. The affinity constant is below 1 pM.