

For Research Use Only

Anti-Human TLR3/CD283 Rabbit Recombinant Antibody, PBS Only

Catalog Number: 98016-2-PBS



Basic Information

Catalog Number: 98016-2-PBS	GenBank Accession Number: BC094737	Purification Method: Protein A purification
Size: 1mg, 2 mg/ml	GeneID (NCBI): 7098	CloneNo.: 230445G9
Source: Rabbit	UNIPROT ID: O15455	
Isotype: IgG	Full Name: toll-like receptor 3	
Immunogen Catalog Number: AG34044	Calculated MW: 904 aa, 104 kDa	

Applications

Tested Applications:
FC (Intra)

Species Specificity:
human

Background Information

TLR3 belongs to the Toll-like receptor family which is important in the innate immune response to pathogens. TLRs are highly conserved from Drosophila to humans and share structural and functional similarities. TLR3 is a nucleotide-sensing TLR that is activated by double-stranded RNA. Upon recognition of dsRNA, TLR3 transmits signals via the adaptor protein TICAM-1/TRIF, leading to the induction of type I IFN, cytokine/chemokine production, and dendritic cell (DC) maturation (PMID: 18262679).

Storage

Storage:
Store at -80°C.

Storage Buffer:
PBS Only

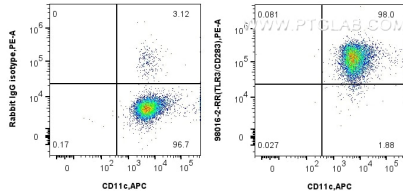
For technical support and original validation data for this product please contact:

T: 1 (888) 4PTGLAB (1-888-478-4522) (toll free in USA), or 1(312) 455-8498 (outside USA)

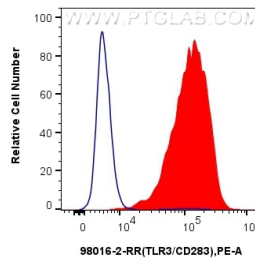
E: proteintech@ptglab.com
W: ptglab.com

This product is exclusively available under Proteintech Group brand and is not available to purchase from any other manufacturer.

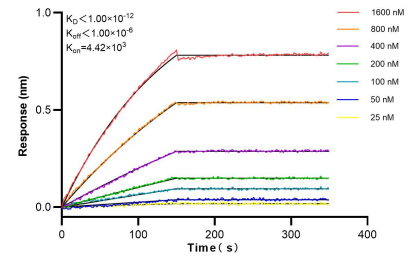
Selected Validation Data



1x10⁶ human monocyte-derived immature dendritic cells were intracellularly stained with 0.25 ug Anti-Human TLR3/CD283 Rabbit Recombinant Antibody (98016-2-RR, Clone: 230445G9) or 0.25 ug Isotype Control and PE-Conjugated AffiniPure Goat Anti-Rabbit IgG(H+L). Cells were then stained with APC Anti-Human CD11c. Cells were incubated with FC Receptor Block prior to fixing and staining. Cells were fixed with 4% PFA and permeabilized with Flow Cytometry Perm



1x10⁶ human monocyte-derived immature dendritic cells were intracellularly stained with 0.25 ug Anti-Human TLR3/CD283 Rabbit Recombinant Antibody (98016-2-RR, Clone: 230445G9) (red) or 0.25 ug Isotype Control (blue) and PE-Conjugated AffiniPure Goat Anti-Rabbit IgG(H+L). Cells were then stained with APC Anti-Human CD11c. Cells were incubated with FC Receptor Block prior to fixing and staining. Cells were fixed with 4% PFA and permeabilized with Flow Cytometry



Bi-layer interferometry (BLI) kinetic assays of 98016-2-RR against Human TLR3/CD283 were performed. The affinity constant is below 1 pM.