

For Research Use Only

# Anti-Human Endoglin/CD105 Rabbit Recombinant Antibody

Catalog Number: 98013-2-RR



## Basic Information

<b>Catalog Number:</b> 98013-2-RR	<b>GenBank Accession Number:</b> BC014271	<b>Purification Method:</b> Protein A purification
<b>Size:</b> 100ug , 1000 µg/ml	<b>GeneID (NCBI):</b> 2022	<b>CloneNo.:</b> 241196D9
<b>Source:</b> Rabbit	<b>UNIPROT ID:</b> P17813	
<b>Isotype:</b> IgG	<b>Full Name:</b> endoglin	
	<b>Calculated MW:</b> 71 kDa	

## Applications

**Tested Applications:**  
FC

**Species Specificity:**  
human

## Background Information

Endoglin (ENG, CD105) is a homodimeric cell membrane glycoprotein of 180 kDa, composed of disulphide-linked subunits of 90-95 kDa. Endoglin is a proliferation-associated and hypoxia-inducible protein mainly expressed on vascular endothelial cells. It acts as an accessory receptor for transforming growth factor beta (TGF-β) and is involved in vascular development and remodeling. The important role of Endoglin in angiogenesis and in tumor progression makes it an ideal target for antiangiogenic therapy and a good marker for tumor prognosis. (PMID: 1326540; 14528280; 21737653; 12773481)

## Storage

**Storage:**  
Store at 2 - 8°C. Stable for one year after shipment.

**Storage Buffer:**  
PBS with 0.09% sodium azide, pH 7.3.

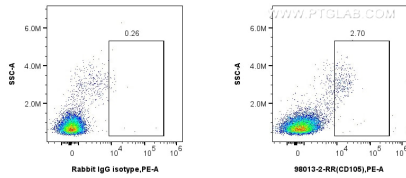
For technical support and original validation data for this product please contact:

T: 1 (888) 4PTGLAB (1-888-478-4522) (toll free in USA), or 1(312) 455-8498 (outside USA)

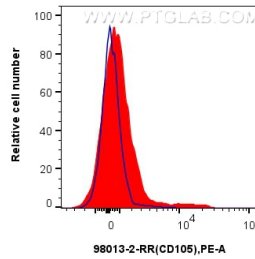
E: [proteintech@ptglab.com](mailto:proteintech@ptglab.com)  
W: [ptglab.com](http://ptglab.com)

**This product is exclusively available under Proteintech Group brand and is not available to purchase from any other manufacturer.**

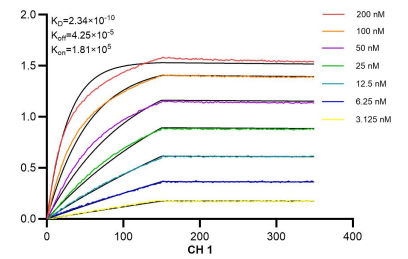
## Selected Validation Data



1x10<sup>6</sup> human PBMCs were surface stained with 0.25 ug Anti-Human Endoglin/CD105 Rabbit Recombinant Antibody (98013-2-RR, Clone: 241196D9) or 0.25 ug Isotype Control, and PE-Conjugated Goat Anti-Rabbit IgG(H+L). Cells were incubated with FC Receptor Block prior to staining. Cells were not fixed.



1x10<sup>6</sup> human PBMCs were surface stained with 0.25 ug Anti-Human Endoglin/CD105 Rabbit Recombinant Antibody (98013-2-RR, Clone: 241196D9) (red) or 0.25 ug Isotype Control (blue), and PE-Conjugated Goat Anti-Rabbit IgG(H+L). Cells were incubated with FC Receptor Block prior to staining. Cells were not fixed.



Biolayer interferometry (BLI) kinetic assays of 98013-2-RR against Human Endoglin/CD105 were performed. The affinity constant is 0.234 nM.