

For Research Use Only

# ALCAM Recombinant monoclonal antibody

Catalog Number: 86811-3-RR



## Basic Information

<b>Catalog Number:</b> 86811-3-RR	<b>GenBank Accession Number:</b> BC137097	<b>Purification Method:</b> Protein A purification
<b>Size:</b> 100ul , Concentration: 1000 µg/ml by Nanodrop;	<b>GeneID (NCBI):</b> 214	<b>CloneNo.:</b> 251789E9
<b>Source:</b> Rabbit	<b>UNIPROT ID:</b> Q13740	<b>Recommended Dilutions:</b> WB: 1:1000-1:6000 IF/ICC: 1:250-1:1000
<b>Isotype:</b> IgG	<b>Full Name:</b> activated leukocyte cell adhesion molecule	
<b>Immunogen Catalog Number:</b> EG5038	<b>Calculated MW:</b> 583 aa, 65 kDa	
	<b>Observed MW:</b> 100 kDa	

## Applications

<b>Tested Applications:</b> WB, IF/ICC, ELISA	<b>Positive Controls:</b>
<b>Species Specificity:</b> human	<b>WB :</b> HeLa cells, A549 cells, LNCaP cells, U2OS cells <b>IF/ICC :</b> A549 cells,

## Background Information

Activated leukocyte cell adhesion molecule (ALCAM, also known as CD166) is a cell adhesion molecule that belongs to the immunoglobulin superfamily. It is involved in cell-cell adhesion through homophilic and heterophilic (to CD6) interactions. ALCAM is widely expressed in a variety of normal tissues. Altered ALCAM expression has been associated with the differentiation state and progression in some neoplasms including melanoma, prostate, colorectal, and breast cancers (PMID: 20461761; 18172759).

## Storage

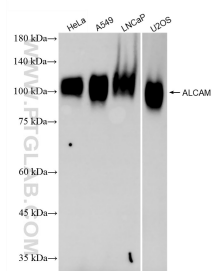
**Storage:**  
Store at -20°C. Stable for one year after shipment.  
**Storage Buffer:**  
PBS with 0.02% sodium azide and 50% glycerol, pH7.3  
**Aliquoting is unnecessary for -20°C storage**

\*\*\* 20ul sizes contain 0.1% BSA

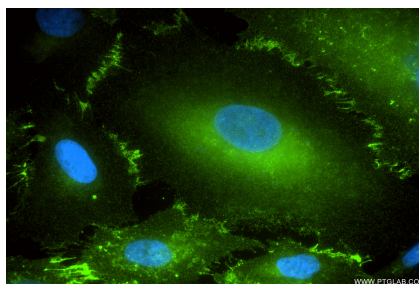
For technical support and original validation data for this product please contact:  
T: 1 (888) 4PTGLAB (1-888-478-4522) (toll free in USA), or 1(312) 455-8498 (outside USA)  
E: [proteintech@ptglab.com](mailto:proteintech@ptglab.com)  
W: [ptglab.com](http://ptglab.com)

This product is exclusively available under Proteintech Group brand and is not available to purchase from any other manufacturer.

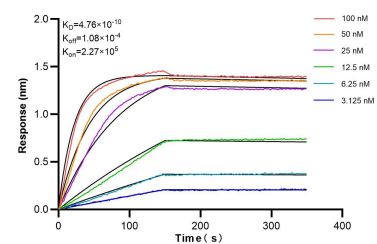
## Selected Validation Data



Various lysates were subjected to SDS PAGE followed by western blot with 86811-3-RR (ALCAM antibody) at dilution of 1:3000 incubated at room temperature for 1.5 hours.



Immunofluorescent analysis of (4% PFA) fixed A549 cells using ALCAM antibody (86811-3-RR, Clone: 251789E9) at dilution of 1:500 and CoraLite® 488-Conjugated Goat Anti-Rabbit IgG(H+L) (SA00013-2).



Biolayer interferometry (BLI) kinetic assays of 86811-3-RR against Human ALCAM were performed. The affinity constant is 0.476 nM.