

For Research Use Only

OLR1/LOX1 Recombinant antibody, PBS Only (Detector)

Catalog Number: 86194-1-PBS



Basic Information

Catalog Number: 86194-1-PBS	GenBank Accession Number: NM_002543.3	Purification Method: Protein A purification
Size: 100ug , Concentration: 1 mg/ml by Nanodrop;	GeneID (NCBI): 4973	CloneNo.: 250525G10
Source: Rabbit	UNIPROT ID: P78380-1	
Isotype: IgG	Full Name: oxidized low density lipoprotein (lectin-like) receptor 1	
Immunogen Catalog Number: EG2911	Calculated MW: 31 kDa	

Applications

Tested Applications:
Cytometric bead array, Sandwich ELISA, Indirect ELISA, Sample test

Species Specificity:
human

Product Information

86194-1-PBS targets OLR1/LOX1 as part of a matched antibody pair:

MP02293-1: 86194-2-PBS capture and 86194-1-PBS detection (validated in Cytometric bead array, Sandwich ELISA)

Unconjugated rabbit recombinant monoclonal antibody in PBS only (BSA and azide free) storage buffer at a concentration of 1 mg/mL, ready for conjugation. Created using Proteintech's proprietary in-house recombinant technology. Recombinant production enables unrivalled batch-to-batch consistency, easy scale-up, and future security of supply.

This conjugation ready format makes antibodies ideal for use in many applications including: ELISAs, multiplex assays requiring matched pairs, mass cytometry, and multiplex imaging applications. Antibody use should be optimized by the end user for each application and assay.

Storage

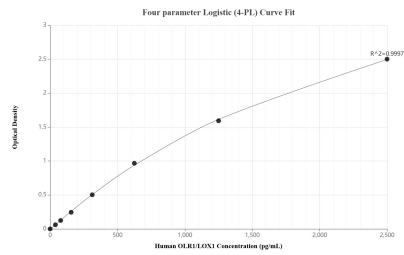
Storage:
Store at -80°C.

Storage Buffer:
PBS only, pH7.3

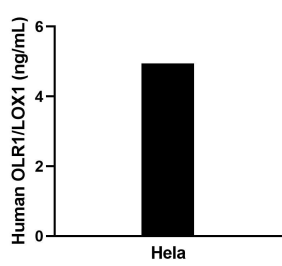
For technical support and original validation data for this product please contact:
T: 1 (888) 4PTGLAB (1-888-478-4522) (toll free in USA), or 1(312) 455-8498 (outside USA)
E: proteintech@ptglab.com
W: ptglab.com

This product is exclusively available under Proteintech Group brand and is not available to purchase from any other manufacturer.

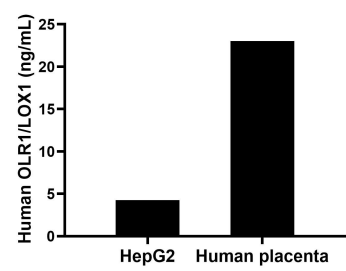
Selected Validation Data



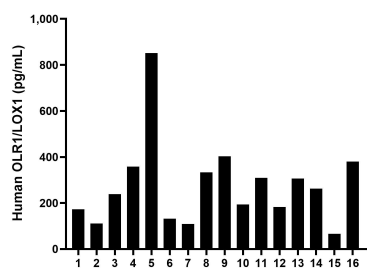
Sandwich ELISA standard curve of MP02293-1, Human OLR1/LOX1 Recombinant Matched Antibody Pair - PBS only. 86194-2-PBS was coated to a plate as the capture antibody and incubated with serial dilutions of standard Eg2911. 86194-1-PBS was HRP conjugated as the detection antibody. Range: 39.1-2500 pg/mL



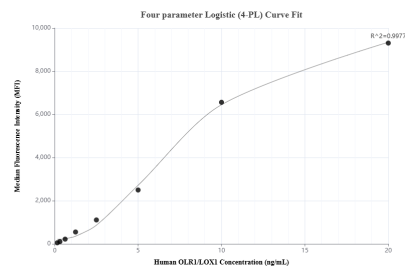
The mean OLR1/LOX1 concentration was determined to be 5.0 ng/mL in HeLa cell extract based on a 0.9 mg/mL extract load.



The mean OLR1/LOX1 concentration was determined to be 4.2 ng/mL in HepG2 cell extract based on a 1.4 mg/mL extract load and 23.0 ng/mL in human placenta extract based on a 3.8 mg/mL extract load.



Plasma of sixteen individual healthy human donors was measured. The OLR1/LOX1 concentration of detected samples was determined to be 275.8 pg/mL with a range of 66.7-851.6 pg/mL.



Cytometric bead array standard curve of MP02293-1, OLR1/LOX1 Recombinant Matched Antibody Pair, PBS Only. Capture antibody: 86194-2-PBS. Detection antibody: 86194-1-PBS. Standard: Eg2911. Range: 0.156-20 ng/mL.