

For Research Use Only

MYH10 Recombinant antibody, PBS Only (Capture)

Catalog Number: 86157-2-PBS



Basic Information

Catalog Number: 86157-2-PBS	GenBank Accession Number: BC150634	Purification Method: Protein A purification
Size: 100ug , Concentration: 1 mg/ml by Nanodrop;	GeneID (NCBI): 4628	CloneNo.: 250791E2
Source: Rabbit	UNIPROT ID: P35580	
Isotype: IgG	Full Name: myosin, heavy chain 10, non-muscle	
Immunogen Catalog Number: AG16113	Calculated MW: 1985 aa, 230 kDa	

Applications

Tested Applications:
Cytometric bead array, Sandwich ELISA, Indirect ELISA, Sample test

Species Specificity:
human

Product Information

86157-2-PBS targets MYH10 as part of a matched antibody pair:

MP02284-1: 86157-2-PBS capture and 86157-1-PBS detection (validated in Cytometric bead array, Sandwich ELISA)

Unconjugated rabbit recombinant monoclonal antibody in PBS only (BSA and azide free) storage buffer at a concentration of 1 mg/mL, ready for conjugation. Created using Proteintech's proprietary in-house recombinant technology. Recombinant production enables unrivalled batch-to-batch consistency, easy scale-up, and future security of supply.

This conjugation ready format makes antibodies ideal for use in many applications including: ELISAs, multiplex assays requiring matched pairs, mass cytometry, and multiplex imaging applications. Antibody use should be optimized by the end user for each application and assay.

Storage

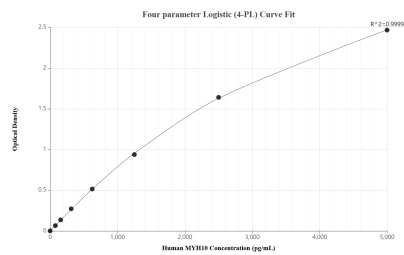
Storage:
Store at -80°C.

Storage Buffer:
PBS only, pH7.3

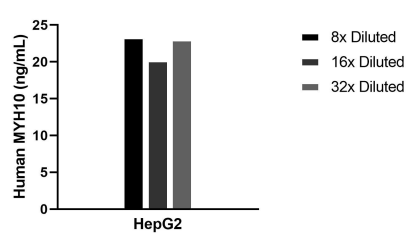
For technical support and original validation data for this product please contact:
T: 1 (888) 4PTGLAB (1-888-478-4522) (toll free in USA), or 1(312) 455-8498 (outside USA)
E: proteintech@ptglab.com
W: ptglab.com

This product is exclusively available under Proteintech Group brand and is not available to purchase from any other manufacturer.

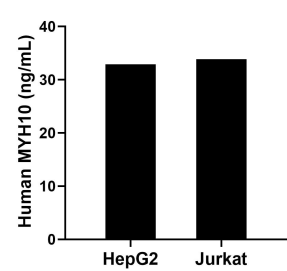
Selected Validation Data



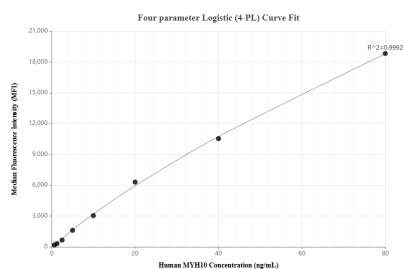
Sandwich ELISA standard curve of MP02284-1, Human MYH10 Recombinant Matched Antibody Pair - PBS only. 86157-2-PBS was coated to a plate as the capture antibody and incubated with serial dilutions of standard Ag16113. 86157-1-PBS was HRP conjugated as the detection antibody. Range: 78.1-5000 pg/mL



The mean MYH10 concentration was determined to be 22.2 ng/mL in HepG2 cell extract based on a 0.9 mg/mL extract load.



The mean MYH10 concentration was determined to be 32.91 ng/mL in HepG2 cell extract based on a 1.10 mg/mL extract load and 33.82 ng/mL in Jurkat cell extract based on a 1.20 mg/mL extract load.



Cytometric bead array standard curve of MP02284-1, MYH10 Recombinant Matched Antibody Pair, PBS Only. Capture antibody: 86157-2-PBS. Detection antibody: 86157-1-PBS. Standard: Ag16113. Range: 0.625-80 ng/mL