

For Research Use Only

# AIF Recombinant antibody, PBS Only (Capture)

Catalog Number: 86156-2-PBS



## Basic Information

<b>Catalog Number:</b> 86156-2-PBS	<b>GenBank Accession Number:</b> BC111065	<b>Purification Method:</b> Protein A purification
<b>Size:</b> 100ug , Concentration: 1 mg/ml by Nanodrop;	<b>GeneID (NCBI):</b> 9131	<b>CloneNo.:</b> 250772F10
<b>Source:</b> Rabbit	<b>UNIPROT ID:</b> O95831	
<b>Isotype:</b> IgG	<b>Full Name:</b> apoptosis-inducing factor, mitochondrion-associated, 1	
<b>Immunogen Catalog Number:</b> AG13268	<b>Calculated MW:</b> 609 aa, 66 kDa	

## Applications

**Tested Applications:**  
Cytometric bead array, Sandwich ELISA, Indirect ELISA, Sample test

**Species Specificity:**  
human

## Product Information

86156-2-PBS targets AIF as part of a matched antibody pair:

MP02287-1: 86156-2-PBS capture and 86156-1-PBS detection (validated in Cytometric bead array)

MP02287-2: 86156-2-PBS capture and 86156-4-PBS detection (validated in Sandwich ELISA)

Unconjugated rabbit recombinant monoclonal antibody in PBS only (BSA and azide free) storage buffer at a concentration of 1 mg/mL, ready for conjugation. Created using Proteintech's proprietary in-house recombinant technology. Recombinant production enables unrivalled batch-to-batch consistency, easy scale-up, and future security of supply.

This conjugation ready format makes antibodies ideal for use in many applications including: ELISAs, multiplex assays requiring matched pairs, mass cytometry, and multiplex imaging applications. Antibody use should be optimized by the end user for each application and assay.

## Storage

**Storage:**  
Store at -80°C.  
**Storage Buffer:**  
PBS only, pH7.3

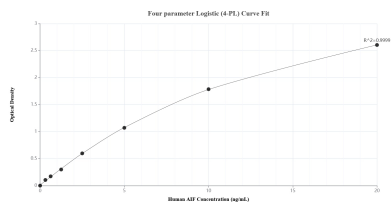
For technical support and original validation data for this product please contact:

T: 1 (888) 4PTGLAB (1-888-478-4522) (toll free in USA), or 1(312) 455-8498 (outside USA)

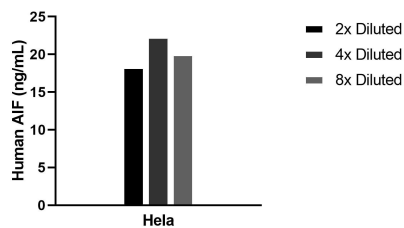
E: [proteintech@ptglab.com](mailto:proteintech@ptglab.com)  
W: [ptglab.com](http://ptglab.com)

This product is exclusively available under Proteintech Group brand and is not available to purchase from any other manufacturer.

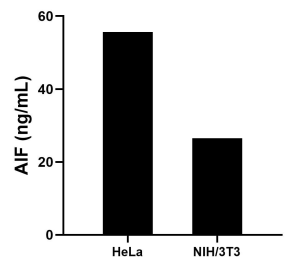
## Selected Validation Data



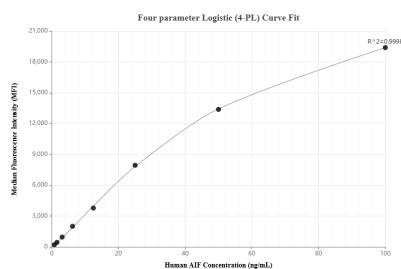
Sandwich ELISA standard curve of MP02287-2, Human AIF Recombinant Matched Antibody Pair - PBS only. 86156-2-PBS was coated to a plate as the capture antibody and incubated with serial dilutions of standard Ag13268. 86156-4-PBS was HRP conjugated as the detection antibody. Range: 0.313-20 ng/mL.



The mean AIF concentration was determined to be 20.2 ng/mL in HeLa cell extract based on a 0.9 mg/mL extract load.



The mean AIF concentration was determined to be 55.63 ng/mL in HeLa cell extract based on a 2.10 mg/mL extract load and 26.49 ng/mL in NIH/3T3 cell extract based on a 1.40 mg/mL extract load.



Cytometric bead array standard curve of MP02287-1, AIF Recombinant Matched Antibody Pair, PBS Only. Capture antibody: 86156-2-PBS. Detection antibody: 86156-1-PBS. Standard: Ag13268. Range: 0.781-100 ng/mL.