

For Research Use Only

FHL2 Recombinant antibody

Catalog Number: 86060-1-RR



Basic Information

Catalog Number: 86060-1-RR	GenBank Accession Number: BC014397	Purification Method: Protein A purification
Size: 100ul , Concentration: 1000 µg/ml by Nanodrop;	GeneID (NCBI): 2274	CloneNo.: 250585E1
Source: Rabbit	UNIPROT ID: Q14192	Recommended Dilutions: WB: 1:5000-1:50000 IF/ICC: 1:500-1:2000
Isotype: IgG	Full Name: four and a half LIM domains 2	
Immunogen Catalog Number: AG29655	Calculated MW: 32 kDa	
	Observed MW: 30-32 kDa	

Applications

Tested Applications: WB, IF/ICC, ELISA	Positive Controls:
Species Specificity: human, mouse	WB : HeLa cells, PANC-1 cells, U2OS cells, hTERT-RPE1 cells, MG-63 cells, NIH/3T3 cells IF/ICC : HeLa cells,

Background Information

FHL2(Four and a half LIM domains protein 2), also known as DRAL. It is located in cytoplasm and nucleus. The protein is expressed in skeletal muscle and heart. May function as a molecular transmitter linking various signaling pathways to transcriptional regulation. Negatively regulates the transcriptional repressor E4F1 and may function in cell growth. Inhibits the transcriptional activity of FOXO1 and its apoptotic function by enhancing the interaction of FOXO1 with SIRT1 and FOXO1 deacetylation. Negatively regulates the calcineurin/NFAT signaling pathway in cardiomyocytes (PMID: 28717008). The molecular weight of FHL2 is 32 kDa.

Storage

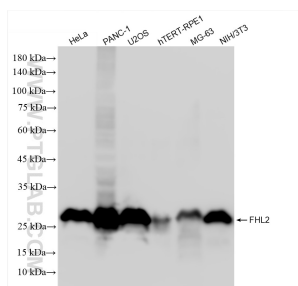
Storage:
Store at -20°C. Stable for one year after shipment.
Storage Buffer:
PBS with 0.02% sodium azide and 50% glycerol, pH7.3
Aliquoting is unnecessary for -20°C storage

*** 20ul sizes contain 0.1% BSA

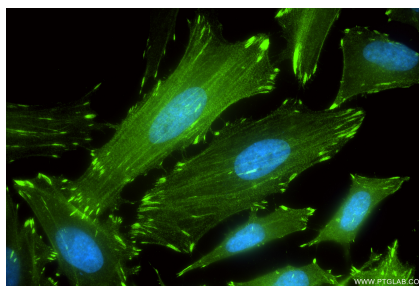
For technical support and original validation data for this product please contact:
T: 1 (888) 4PTGLAB (1-888-478-4522) (toll free in USA), or 1(312) 455-8498 (outside USA)
E: proteintech@ptglab.com
W: ptglab.com

This product is exclusively available under Proteintech Group brand and is not available to purchase from any other manufacturer.

Selected Validation Data



Various lysates were subjected to SDS PAGE followed by western blot with 86060-1-RR (FHL2 antibody) at dilution of 1:10000 incubated at room temperature for 1.5 hours.



Immunofluorescent analysis of (4% PFA) fixed HeLa cells using FHL2 antibody (86060-1-RR, Clone: 250585E1) at dilution of 1:1000 and CoraLite®488-Conjugated Goat Anti-Rabbit IgG(H+L) (SA00013-2).