

For Research Use Only

FHL2 Recombinant antibody, PBS Only

Catalog Number: 86060-1-PBS



Basic Information

Catalog Number: 86060-1-PBS	GenBank Accession Number: BC014397	Purification Method: Protein A purification
Size: 100ug , Concentration: 1 mg/ml by Nanodrop;	GeneID (NCBI): 2274	CloneNo.: 250585E1
Source: Rabbit	UNIPROT ID: Q14192	
Isotype: IgG	Full Name: four and a half LIM domains 2	
Immunogen Catalog Number: AG29655	Calculated MW: 32 kDa	
	Observed MW: 30-32 kDa	

Applications

Tested Applications:
WB, IF/ICC, Indirect ELISA

Species Specificity:
human, mouse

Background Information

FHL2(Four and a half LIM domains protein 2), also known as DRAL. It is located in cytoplasm and nucleus. The protein is expressed in skeletal muscle and heart. May function as a molecular transmitter linking various signaling pathways to transcriptional regulation. Negatively regulates the transcriptional repressor E4F1 and may function in cell growth. Inhibits the transcriptional activity of FOXO1 and its apoptotic function by enhancing the interaction of FOXO1 with SIRT1 and FOXO1 deacetylation. Negatively regulates the calcineurin/NFAT signaling pathway in cardiomyocytes (PMID: 28717008). The molecular weight of FHL2 is 32 kDa.

Storage

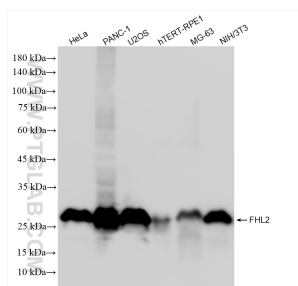
Storage:
Store at -80°C.

Storage Buffer:
PBS only, pH7.3

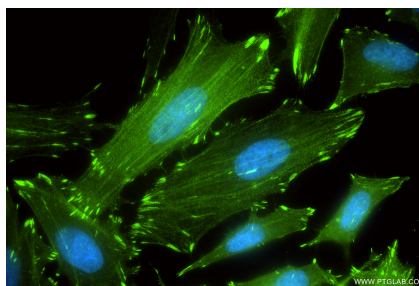
For technical support and original validation data for this product please contact:
T: 1 (888) 4PTGLAB (1-888-478-4522) (toll free in USA), or 1(312) 455-8498 (outside USA)
E: proteintech@ptglab.com
W: ptglab.com

This product is exclusively available under Proteintech Group brand and is not available to purchase from any other manufacturer.

Selected Validation Data



Various lysates were subjected to SDS PAGE followed by western blot with 86060-1-RR (FHL2 antibody) at dilution of 1:10000 incubated at room temperature for 1.5 hours. This data was developed using the same antibody clone with 86060-1-PBS in a different storage buffer formulation.



Immunofluorescent analysis of (4% PFA) fixed HeLa cells using FHL2 antibody (86060-1-RR, Clone: 250585E1) at dilution of 1:1000 and CoraLite®488-Conjugated Goat Anti-Rabbit IgG(H+L) (SA00013-2). This data was developed using the same antibody clone with 86060-1-PBS in a different storage buffer formulation.