

For Research Use Only

# Peripherin Recombinant antibody, PBS Only (Detector)

Catalog Number: 86057-1-PBS



## Basic Information

<b>Catalog Number:</b> 86057-1-PBS	<b>GenBank Accession Number:</b> BC032703	<b>Purification Method:</b> Protein A purification
<b>Size:</b> 100ug , Concentration: 1 mg/ml by Nanodrop;	<b>GeneID (NCBI):</b> 5630	<b>CloneNo.:</b> 250661A3
<b>Source:</b> Rabbit	<b>UNIPROT ID:</b> P41219	
<b>Isotype:</b> IgG	<b>Full Name:</b> peripherin	
<b>Immunogen Catalog Number:</b> AG11365	<b>Calculated MW:</b> 470 aa, 54 kDa	
	<b>Observed MW:</b> 54-60 kDa	

## Applications

**Tested Applications:**  
WB, IF-P, Cytometric bead array, Sandwich ELISA, Indirect ELISA, Sample test

**Species Specificity:**  
human, mouse, rat

## Product Information

86057-1-PBS targets Peripherin as part of a matched antibody pair:

MP02242-1: 86057-2-PBS capture and 86057-1-PBS detection (validated in Cytometric bead array)

MP02242-2: 86057-4-PBS capture and 86057-1-PBS detection (validated in Sandwich ELISA)

Unconjugated rabbit recombinant monoclonal antibody in PBS only (BSA and azide free) storage buffer at a concentration of 1 mg/mL, ready for conjugation. Created using Proteintech's proprietary in-house recombinant technology. Recombinant production enables unrivalled batch-to-batch consistency, easy scale-up, and future security of supply.

This conjugation ready format makes antibodies ideal for use in many applications including: ELISAs, multiplex assays requiring matched pairs, mass cytometry, and multiplex imaging applications. Antibody use should be optimized by the end user for each application and assay.

## Background Information

Peripherin is a neuron-specific intermediate filament protein that is particularly expressed in peripheral nervous system. It is used to study peripheral nerve development and regeneration, as it is highly expressed during elongation of axon. Peripherin is a routine marker for unmyelinated neurons in trigeminal ganglion (TG) and the dorsal root ganglion (DRG). Peripherin is also expressed in peri-insular areas of islets and it has been identified as a key autoantigen for type 1A diabetes.

## Storage

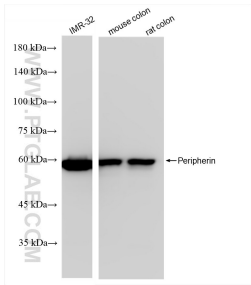
**Storage:**  
Store at -80°C.

**Storage Buffer:**  
PBS only, pH7.3

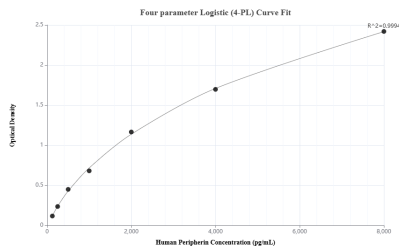
For technical support and original validation data for this product please contact:  
T: 1 (888) 4PTGLAB (1-888-478-4522) (toll free in USA), or 1(312) 455-8498 (outside USA)  
E: [proteintech@ptglab.com](mailto:proteintech@ptglab.com)  
W: [ptglab.com](http://ptglab.com)

This product is exclusively available under Proteintech Group brand and is not available to purchase from any other manufacturer.

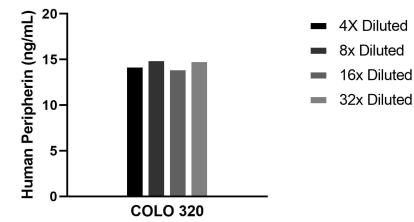
Selected Validation Data



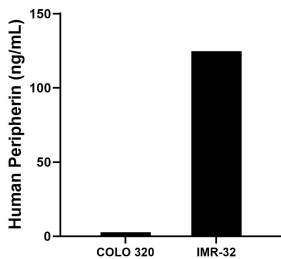
Various lysates were subjected to SDS PAGE followed by western blot with 86057-1-RR (Peripherin antibody) at dilution of 1:10000 incubated at room temperature for 1.5 hours. This data was developed using the same antibody clone with 86057-1-PBS in a different storage buffer formulation.



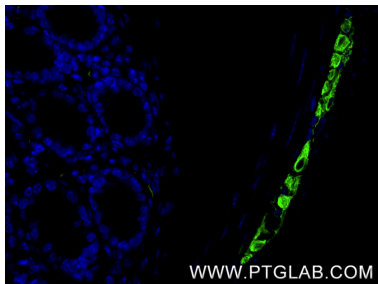
Sandwich ELISA standard curve of MP02242-2, Human Peripherin Recombinant Matched Antibody Pair - PBS only. 86057-4-PBS was coated to a plate as the capture antibody and incubated with serial dilutions of standard Ag11365. 86057-1-PBS was HRP conjugated as the detection antibody. Range: 125-8000 pg/mL



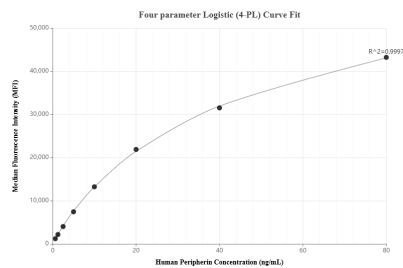
The mean Peripherin concentration was determined to be 14.5 ng/mL in COLO 320 cell extract based on a 1.5 mg/mL extract load.



The mean Peripherin concentration was determined to be 2.78 ng/mL in COLO 320 cell extract based on a 1.7 mg/mL extract load and 124.43 ng/mL in IMR-32 extract based on a 2.0 mg/mL extract load.



Immunofluorescent analysis of (4% PFA) fixed paraffin-embedded mouse colon tissue using Peripherin antibody (86057-1-RR, Clone: 250661A3) at dilution of 1:1000 and CoraLite® 488-Conjugated Goat Anti-Rabbit IgG(H+L) (SA00013-2). Heat mediated antigen retrieval with Tris-EDTA buffer (pH 9.0). This data was developed using the same antibody clone with 86057-1-PBS in a different storage buffer formulation.



Cytometric bead array standard curve of MP02242-1, Peripherin Recombinant Matched Antibody Pair, PBS Only. Capture antibody: 86057-2-PBS. Detection antibody: 86057-1-PBS. Standard: Ag11365. Range: 0.625-80 ng/mL