

For Research Use Only

Napsin A Recombinant antibody, PBS Only

Catalog Number: 86052-1-PBS



Basic Information

Catalog Number: 86052-1-PBS	GenBank Accession Number: BC017842	Purification Method: Protein A purification
Size: 100ug , Concentration: 1 mg/ml by Nanodrop;	GeneID (NCBI): 9476	CloneNo.: 242433D1
Source: Rabbit	UNIPROT ID: O96009	
Isotype: IgG	Full Name: napsin A aspartic peptidase	
Immunogen Catalog Number: AG9721	Calculated MW: 420 aa, 45 kDa	
	Observed MW: 40-45 kDa	

Applications

Tested Applications:
WB, Indirect ELISA

Species Specificity:
human

Background Information

Napsin is found in two isoforms, napsin A and B, with highly homologous nucleotide sequences (91.2%). Napsin A appears to be a functional proteinase, predominantly expressed in lung and kidney. Napsin B is transcribed exclusively in cells related to the immune system and lacks an in-frame stop codon and is believed to be a pseudogene.(PMID:12698189). Napsin A is superior to TTF-1 in distinguishing primary lung ACA from other carcinomas (except kidney), particularly primary lung small cell carcinoma, and primary thyroid carcinoma. (PMID:22288963).

Storage

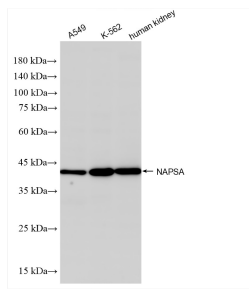
Storage:
Store at -80°C.

Storage Buffer:
PBS only, pH7.3

For technical support and original validation data for this product please contact:
T: 1 (888) 4PTGLAB (1-888-478-4522) (toll free in USA), or 1(312) 455-8498 (outside USA)
E: proteintech@ptglab.com
W: ptglab.com

This product is exclusively available under Proteintech Group brand and is not available to purchase from any other manufacturer.

Selected Validation Data



Various lysates were subjected to SDS PAGE followed by western blot with 86052-1-RR (NAPSAs antibody) at dilution of 1:3000 incubated at room temperature for 1.5 hours. This data was developed using the same antibody clone with 86052-1-PBS in a different storage buffer formulation.