

For Research Use Only

# KDM5C Recombinant antibody

Catalog Number: 86017-1-RR



## Basic Information

<b>Catalog Number:</b> 86017-1-RR	<b>GenBank Accession Number:</b> BC054499	<b>Purification Method:</b> Protein A purification
<b>Size:</b> 100ul , Concentration: 1000 µg/ml by Nanodrop;	<b>GeneID (NCBI):</b> 8242	<b>CloneNo.:</b> 250484C10
<b>Source:</b> Rabbit	<b>UNIPROT ID:</b> P41229	<b>Recommended Dilutions:</b> WB: 1:5000-1:50000
<b>Isotype:</b> IgG	<b>Full Name:</b> lysine (K)-specific demethylase 5C	
<b>Immunogen Catalog Number:</b> AG5791	<b>Calculated MW:</b> 176 kDa	
	<b>Observed MW:</b> 171-180 kDa	

## Applications

<b>Tested Applications:</b> WB, ELISA	<b>Positive Controls:</b> WB : HeLa cells, Jurkat cells, MCF-7 cells, HEK-293 cells, NIH/3T3 cells
<b>Species Specificity:</b> human, mouse	

## Background Information

KDM5C belongs to the ARID protein family that harbors conserved DNA-binding motifs and acts as a histone H3 lysine 4 demethylase, suggesting a potential role in epigenetic regulation during development, cell differentiation (PMID:21575681). KDM5C protein is homologous to three other proteins of the human JARID1 family (JARID1A, JARID1B and JARID1C). This family shares several evolutionarily conserved domains, including the catalytic JmjC domain, JmjN domain, Arid/Bright domain, C5HC2 zinc-finger domain and two plant homeodomains (PHD), a motif that binds methyl-lysine residues (PMID:17320160,17320161).

## Storage

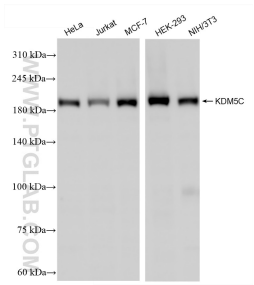
**Storage:**  
Store at -20°C. Stable for one year after shipment.  
**Storage Buffer:**  
PBS with 0.02% sodium azide and 50% glycerol, pH7.3  
Aliquoting is unnecessary for -20°C storage

\*\*\* 20ul sizes contain 0.1% BSA

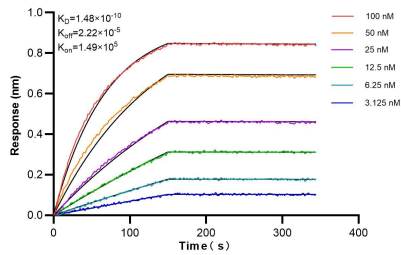
For technical support and original validation data for this product please contact:  
T: 1 (888) 4PTGLAB (1-888-478-4522) (toll free in USA), or 1(312) 455-8498 (outside USA)  
E: proteintech@ptglab.com  
W: ptglab.com

This product is exclusively available under Proteintech Group brand and is not available to purchase from any other manufacturer.

Selected Validation Data



Various lysates were subjected to SDS PAGE followed by western blot with 86017-1-RR (KDM5C antibody) at dilution of 1:10000 incubated at room temperature for 1.5 hours.



Biolayer interferometry (BLI) kinetic assays of 86017-1-RR against Human KDM5C were performed. The affinity constant is 0.148 nM.