

For Research Use Only

SMARCC1 Recombinant antibody, PBS Only (Detector)

Catalog Number: 86015-2-PBS



Basic Information

Catalog Number:

86015-2-PBS

Size:

100ug, Concentration: 1 mg/ml by Nanodrop;

Source:

Rabbit

Isotype:

IgG

Immunogen Catalog Number:

AG12109

GenBank Accession Number:

BC050564

GeneID (NCBI):

6599

UNIPROT ID:

Q92922

Full Name:

SWI/SNF related, matrix associated, actin dependent regulator of chromatin, subfamily c, member 1

Calculated MW:

1105 aa, 123 kDa

Purification Method:

Protein A purification

CloneNo.:

250455C8

Applications

Tested Applications:

Cytometric bead array, Sandwich ELISA, Indirect ELISA, Sample test

Species Specificity:

human

Product Information

86015-2-PBS targets SMARCC1 as part of a matched antibody pair:

MP02222-1: 86015-1-PBS capture and 86015-2-PBS detection (validated in Cytometric bead array)

MP02222-2: 86015-3-PBS capture and 86015-2-PBS detection (validated in Sandwich ELISA)

Unconjugated rabbit recombinant monoclonal antibody in PBS only (BSA and azide free) storage buffer at a concentration of 1 mg/mL, ready for conjugation. Created using Proteintech's proprietary in-house recombinant technology. Recombinant production enables unrivalled batch-to-batch consistency, easy scale-up, and future security of supply.

This conjugation ready format makes antibodies ideal for use in many applications including: ELISAs, multiplex assays requiring matched pairs, mass cytometry, and multiplex imaging applications. Antibody use should be optimized by the end user for each application and assay.

Storage

Storage:

Store at -80°C.

Storage Buffer:

PBS only, pH7.3

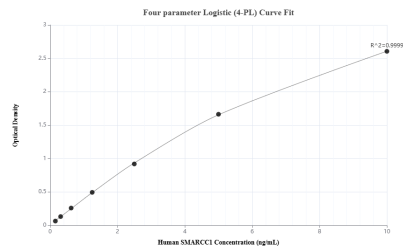
For technical support and original validation data for this product please contact:

T: 1 (888) 4PTGLAB (1-888-478-4522) (toll free in USA), or 1(312) 455-8498 (outside USA)

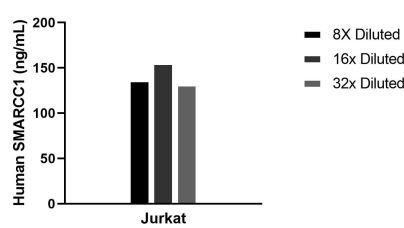
E: proteintech@ptglab.com
W: ptglab.com

This product is exclusively available under Proteintech Group brand and is not available to purchase from any other manufacturer.

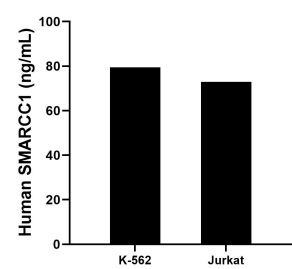
Selected Validation Data



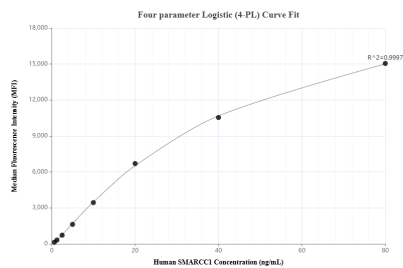
Sandwich ELISA standard curve of MP02222-2, Human SMARCC1 Recombinant Matched Antibody Pair - PBS only. 86015-3-PBS was coated to a plate as the capture antibody and incubated with serial dilutions of standard Ag12109. 86015-2-PBS was HRP conjugated as the detection antibody. Range: 0.156-10 ng/mL



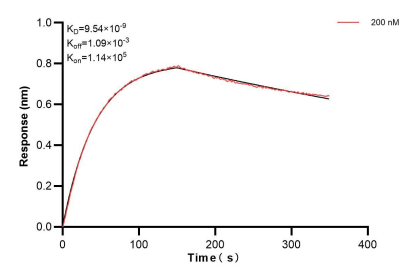
The mean SMARCC1 concentration was determined to be 130.2 ng/mL in Jurkat cell extract based on a 2.2 mg/mL extract load.



The mean SMARCC1 concentration was determined to be 79.50 ng/mL in K-562 cell extract based on a 3.0 mg/mL extract load and 72.90 ng/mL in Jurkat cell extract based on a 2.2 mg/mL extract load.



Cytometric bead array standard curve of MP02222-1, SMARCC1 Recombinant Matched Antibody Pair, PBS Only. Capture antibody: 86015-1-PBS. Detection antibody: 86015-2-PBS. Standard: Ag12109. Range: 0.625-80 ng/mL



Biolayer interferometry (BLI) kinetic assay of 86015-2-PBS against Human SMARCC1 was performed. The affinity constant is 9.54 nM.