

For Research Use Only

ELA2 Recombinant antibody, PBS Only (Capture/Detector)

Catalog Number: 85965-2-PBS



Basic Information

Catalog Number: 85965-2-PBS	GenBank Accession Number: NM_001972.4	Purification Method: Protein A purification
Size: 100ug , Concentration: 1 mg/ml by Nanodrop;	GeneID (NCBI): 1991	CloneNo.: 250346D5
Source: Rabbit	UNIPROT ID: P08246	
Isotype: IgG	Full Name: elastase 2, neutrophil	
Immunogen Catalog Number: EG3192	Calculated MW: 29KD	

Applications

Tested Applications:
Cytometric bead array, Sandwich ELISA, Indirect ELISA, Sample test

Species Specificity:
human

Product Information

85965-2-PBS targets ELA2 as part of a matched antibody pair:

MP02206-1: 85965-2-PBS capture and 85965-1-PBS detection (validated in Cytometric bead array)

MP02206-2: 85965-4-PBS capture and 85965-2-PBS detection (validated in Sandwich ELISA)

Unconjugated rabbit recombinant monoclonal antibody in PBS only (BSA and azide free) storage buffer at a concentration of 1 mg/mL, ready for conjugation. Created using Proteintech's proprietary in-house recombinant technology. Recombinant production enables unrivalled batch-to-batch consistency, easy scale-up, and future security of supply.

This conjugation ready format makes antibodies ideal for use in many applications including: ELISAs, multiplex assays requiring matched pairs, mass cytometry, and multiplex imaging applications. Antibody use should be optimized by the end user for each application and assay.

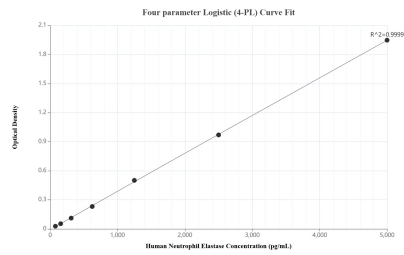
Storage

Storage:
Store at -80°C.
Storage Buffer:
PBS only, pH7.3

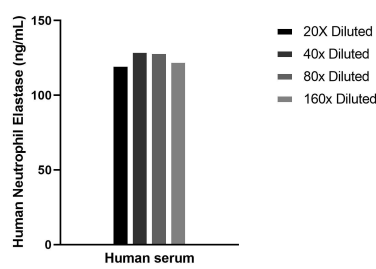
For technical support and original validation data for this product please contact:
T: 1 (888) 4PTGLAB (1-888-478-4522) (toll free in USA), or 1(312) 455-8498 (outside USA)
E: proteintech@ptglab.com
W: ptglab.com

This product is exclusively available under Proteintech Group brand and is not available to purchase from any other manufacturer.

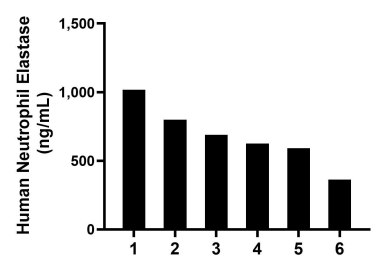
Selected Validation Data



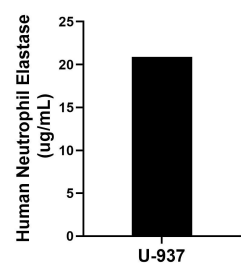
Sandwich ELISA standard curve of MP02206-2, Human Neutrophil Elastase Recombinant Matched Antibody Pair - PBS only. 85965-4-PBS was coated to a plate as the capture antibody and incubated with serial dilutions of standard Eg3192. 85965-2-PBS was HRP conjugated as the detection antibody. Range: 78.1-5000 pg/mL



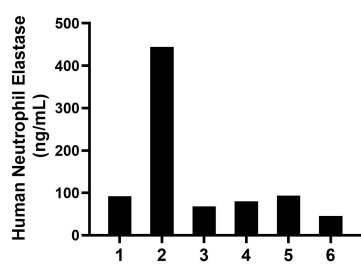
The mean Neutrophil Elastase concentration was determined to be 125.3 ng/mL in human serum.



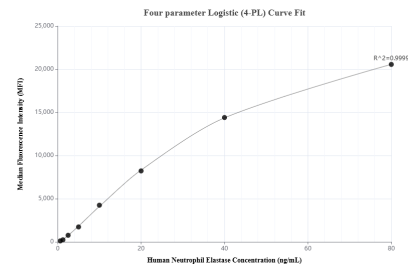
Saliva of six individual healthy human donors was measured. The Neutrophil Elastase concentration of detected samples was determined to be 681.2 ng/mL with a range of 363.2-1,018.3 ng/mL



The mean Neutrophil Elastase concentration was determined to be 20.9 ug/mL in U-937 cell extract based on a 2.6 mg/mL extract load.



Serum of six individual healthy human donors was measured. The Neutrophil Elastase concentration of detected samples was determined to be 137.2 ng/mL with a range of 45.9-444.0 ng/mL



Cytometric bead array standard curve of MP02206-1, Neutrophil Elastase Recombinant Matched Antibody Pair, PBS Only. Capture antibody: 85965-2-PBS. Detection antibody: 85965-1-PBS. Standard: Eg3192. Range: 0.625-80 ng/mL